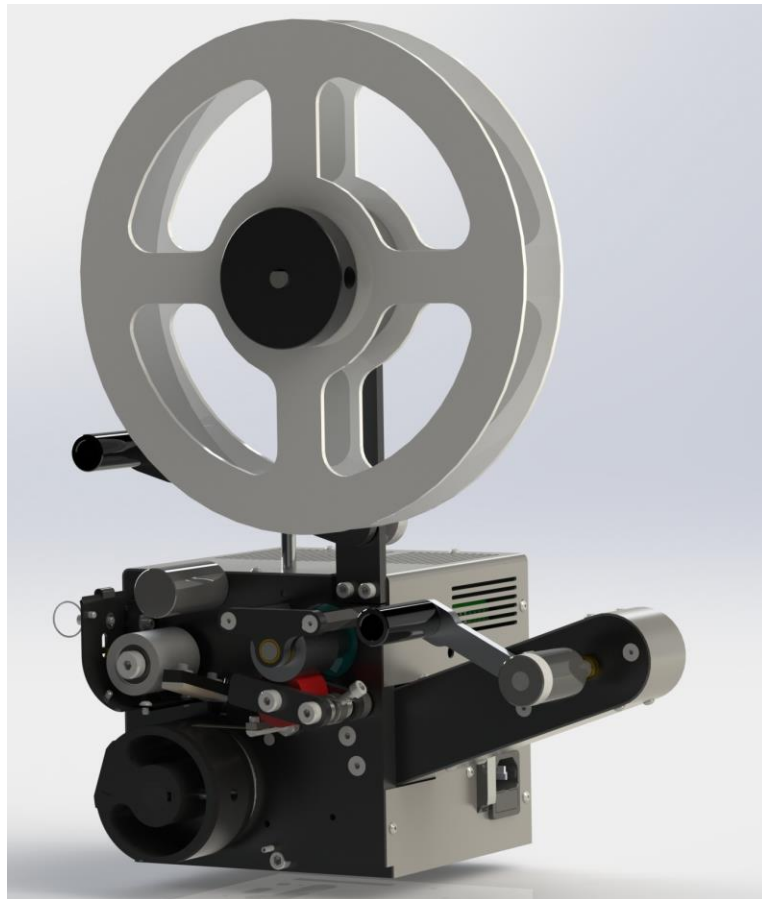




POSTMATIC, INC.

MODEL 6000SA STAMP AFFIXER

Parts Manual



Postmatic, Inc.

9405 Holly Street Ste D

Minneapolis, MN 55433

Phone 763-784-6046

Toll Free 888-784-6046

Fax 763-784-9433

Table of Contents

Assembly Frame & Cover	2
Assembly Head End Plate.....	3
Assembly Back End Plate	4
Assembly Circuit Board	5
Assembly Electrical Panel.....	6
Assembly Nip Roller	7
Assembly Peel Bar Plate.....	8
Assembly Knife Pivot.....	9
Assembly Main Shaft	100
Assembly Stamp Roll Pivot.....	111
Assembly Take Up Arm	122
Assembly Traction Feed Roller.....	133
Assembly Transformer	14
Assembly Vacuum Head.....	15

Assembly Frame & Cover

ITEM NO.	PART NUMBER	DESCRIPTION	QTY
1	100002	BASE PLATE	1
2	WIRE CLIP	WIRE CLIP	2
3	1061	5-40 X 1/2 SHCS BLK	2
4	100053	HEAD END PLATE	1
5	8810	1/4 X 3/8 POLY TUBING	1
6	200024	PROX MOUNTING BLOCK	1
7	100509	PROX-INDUCTIVE DC	1
8	1155	8-32 X 1/2 SHCS BLK	2
9	1140	8-32 X 3/8 PHMS Z	2
10	100035	MACHINE COVER	1
11	7090	COVER HANDLE	1
12	1072	5-40 X 1/4 BHCS BLK	7
13	8046	DOUBLE END 3/8" HOSE COUPLER	1
14	100054	TAIL END PLATE	1
15	1245	1/4-20 X 3/4 SHCS BLK	4
16	8195	BUSHING / AA-744-5	1
17	1150	8-32 X 3/8 SHCS BLK	2
18	4070	#8S WASHER FLAT BRASS	2

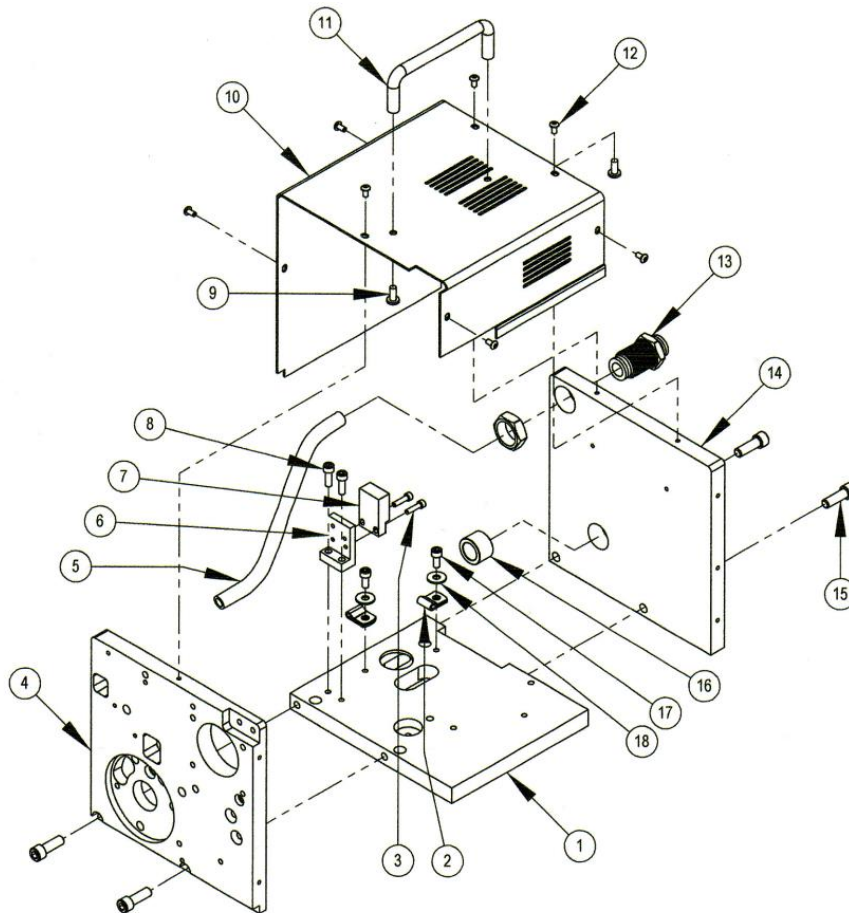


FIG. 1

Assembly Head End Plate

ITEM NO.	PART NUMBER	DESCRIPTION	QTY
1	100053	HEAD END PLATE	1
2	5030	1/8 X 5/8 SPR PIN BLK	2
3	4035	1/4-20 NUT Z	1
4	600027	STEM FOR STAMP RETAINER	1
5	500029	STAMP RETAINER SPRING	1
6	500028	CLAMP FOR STAMP RETAINER	1
7	1040	5-40 X 1/4 SHCS BLK	2
8	3050	3/8 X 1-3/4 SH BOLT	1
9	8205	ROLLER BEARING R-6 DBL SEAL	2
10	200025	WEB IDLER ROLLER	1
11	5069	3/8" GRIP RING	1
12	100026	STATIONARY ROLLER	1
13	1212	10-24 X 1 SHCS BLK	1

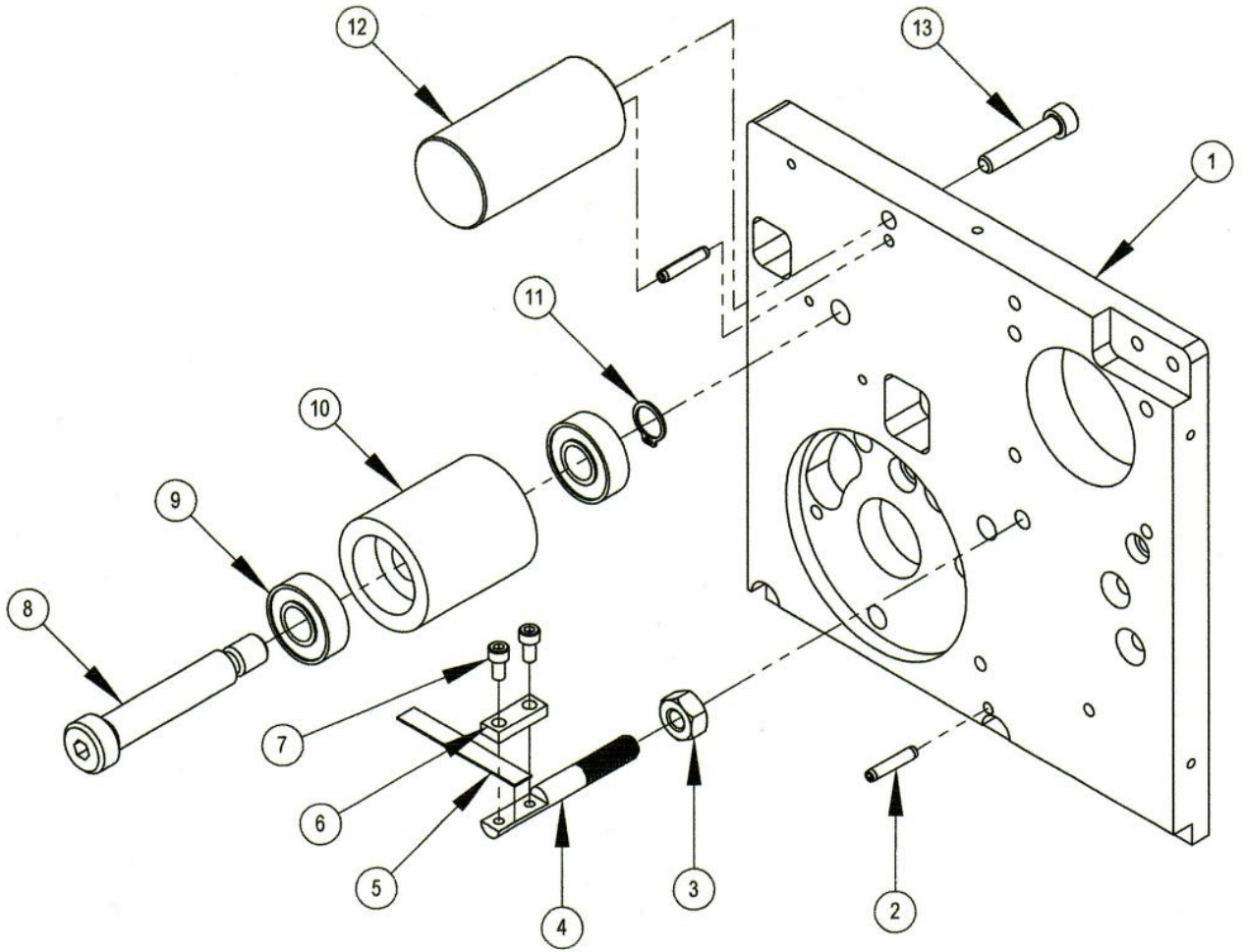


FIG. 2

Assembly Back End Plate

ITEM NO.	PART NUMBER	DESCRIPTION	QTY
1	100053	HEAD END PLATE	1
2	8095	BUSHING / FF843-4	1
3	5069	3/8" GRIP RING	1
4	500045	ANCHOR	1
5	4055	#8 FL WASHER Z	1
6	1215	10-24 X 1/2 HHMS Z	1
7	8205	ROLLER BEARING R-6 DBL SEAL	2
8	3045	3/8 X 3/4 SH BOLT	1
9	1195	10-24 X 5/8 SHCS BLK	3
10	111056	DC DRIVE MOTOR ASSY	1

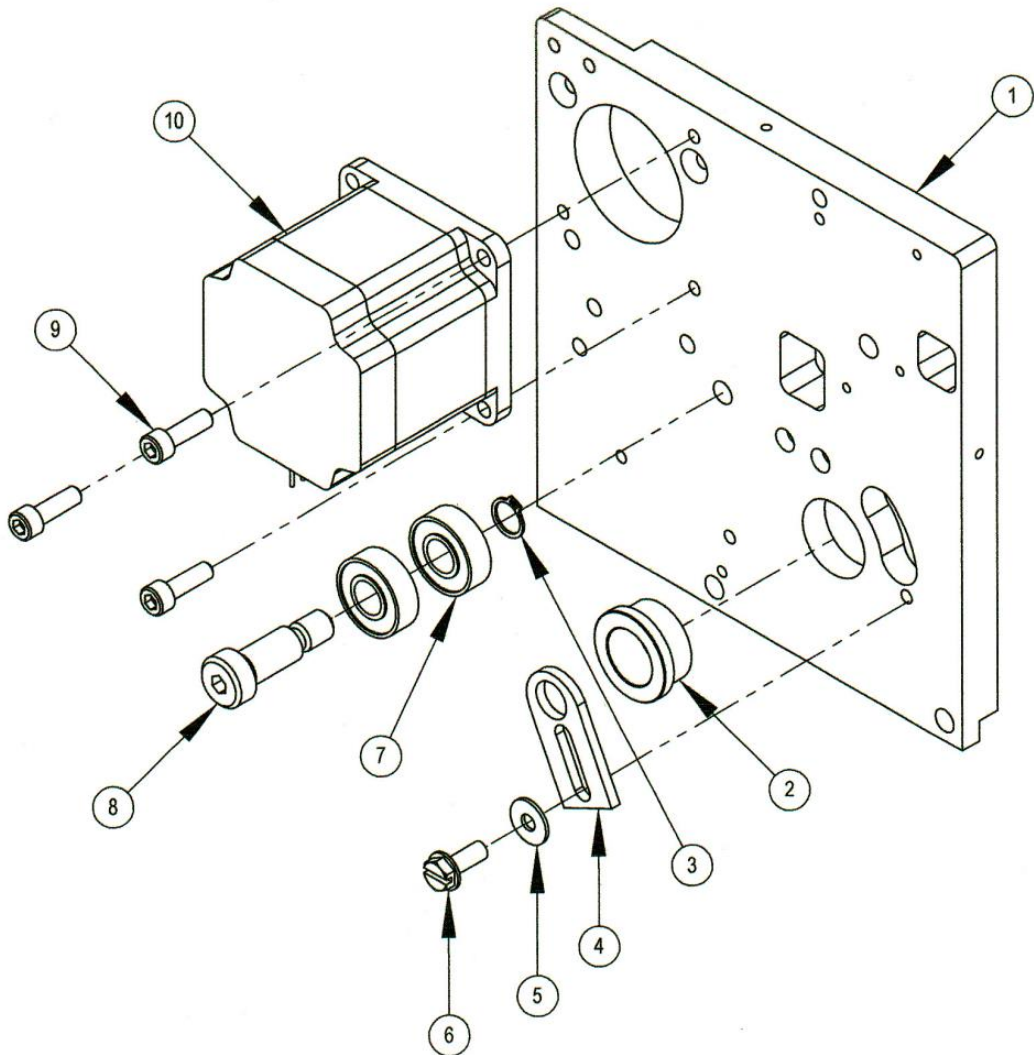


FIG. 3

Assembly Circuit Board

ITEM NO.	PART NUMBER	DESCRIPTION	QTY
1	111503	BOARD ASSY STEPPER CIRCUIT P5	1
2	1050	5-40 X 3/8 SHCS BLK	1
3	100071	HEAT SINK CIRCUIT BOARD P5	1
4	4010	5-40 NUT Z	1
5	100070	POWER SUPPLY MTG PANEL	1
6	1040	5-40 X 1/4 SHCS BLK	2
7	1220	10-24 X 3/8 BHCS BLK	1
8	100064	PLATE STAND OFF	1
9	1195	10-24 X 5/8 SHCS BLK	1
10	1082	6-32 X 1/4 PHIL PAN M/S ZP	7
11	8007	3/8" ALUMINUM HEX STAND OFF	4

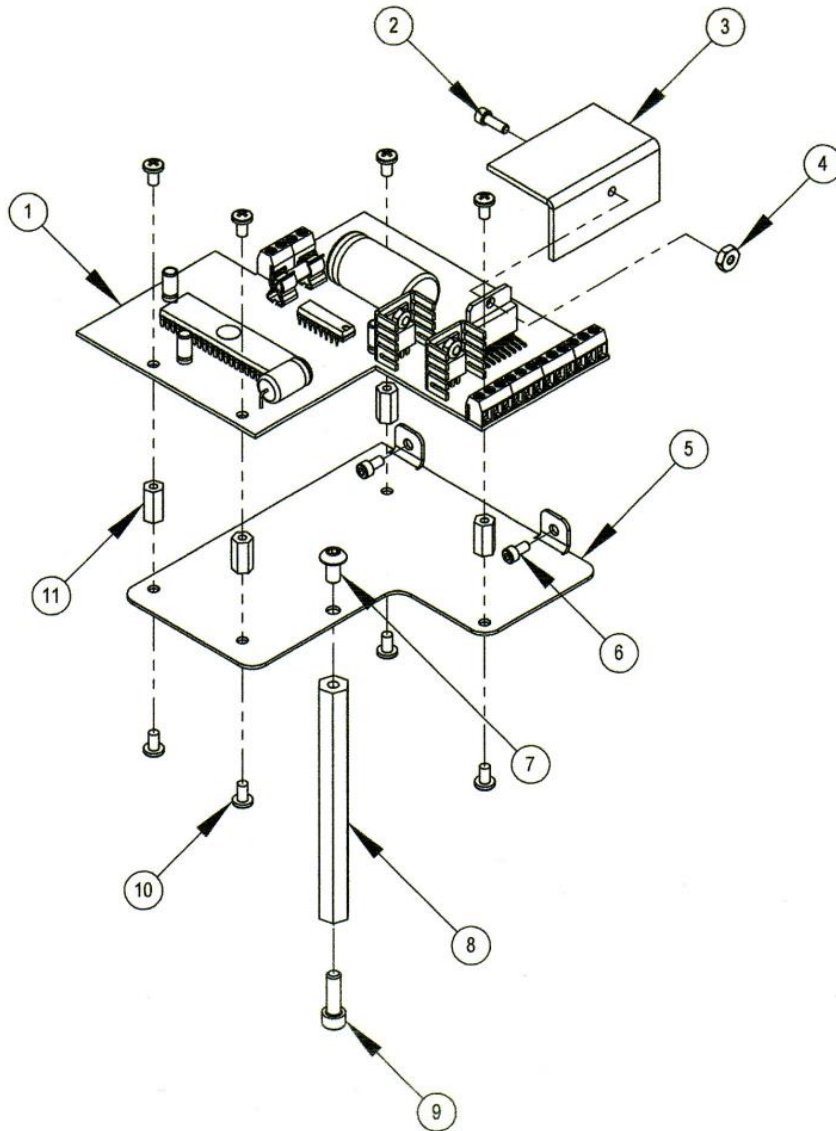


FIG. 4

Assembly Electrical Panel

ITEM NO.	PART NUMBER	DESCRIPTION	QTY
1	100036	ELECTRICAL PANEL	1
2	1072	5-40 X 1/4 BHCS BLK	5
3	100517	POWER ENTRY W/FUSE	1
4	100515	SWITCH ROCKER ON/OFF	1
5	200023	AMPLIFIER MOUNTING BLOCK	1
6	100507-BRKT	100507-BRKT	1
7	1095	6-32 X 5/8 SHCS BLK	2
8	100507	FIB OPTIC AMPLIFIER/ONE TOUCH	1

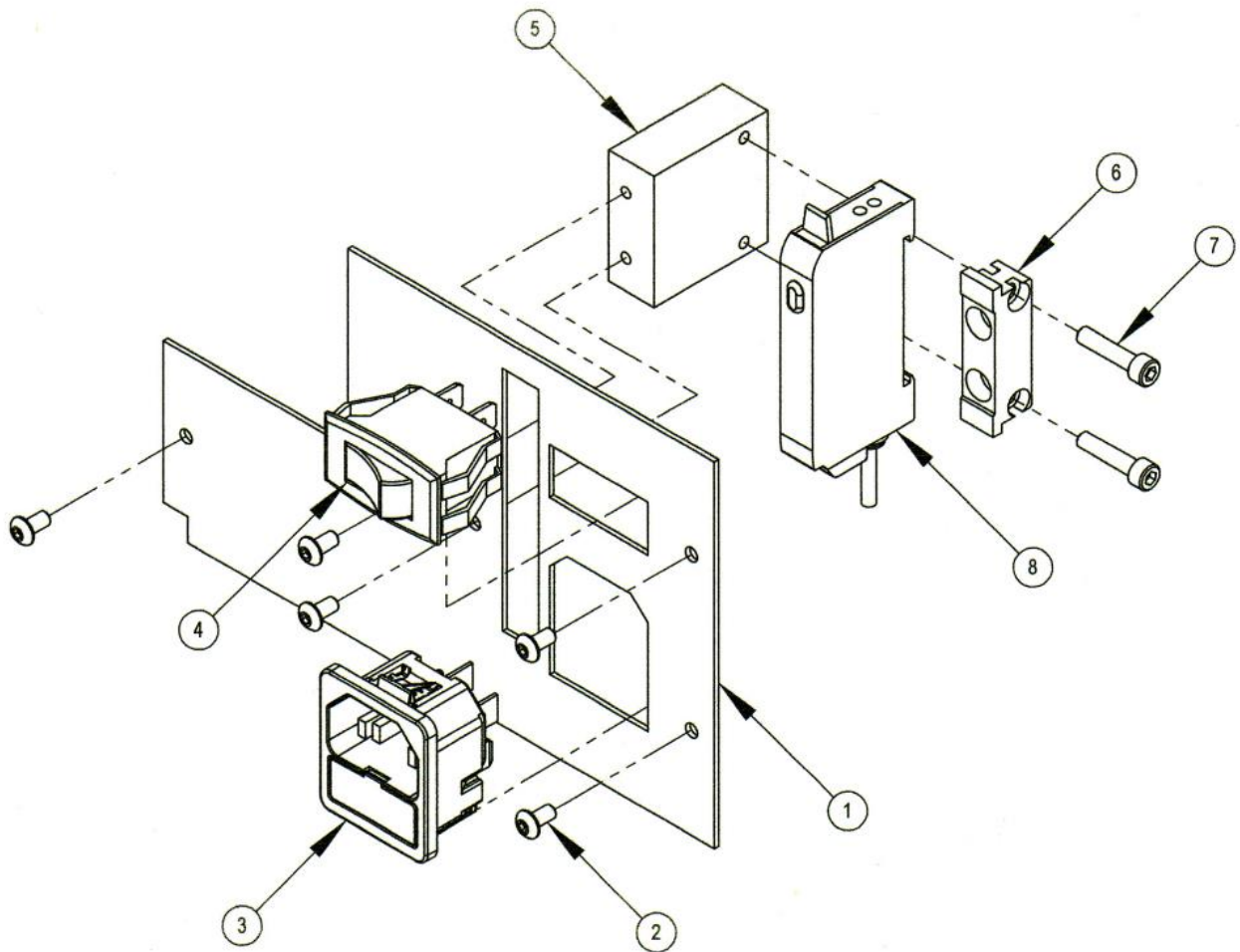


FIG. 6

Assembly Nip Roller

ITEM NO.	PART NUMBER	DESCRIPTION	QTY
1	100550	NIP ROLLER NEOPRENE	1
2	200012	INNER NIP ROLLER ARM	1
3	4040	1/4-20 JAM NUT Z	1
4	8010	5/16 ID SET COLLAR	2
5	1183	10-32 X 1/2 SHCS BLK	1
6	100540	NIP ROLLER SPRING	1
7	200013	OUTER NIP ROLLER ARM	1
8	8125	BUSHING / AA 306-11	2
9	3035	5/16 X 2 SH BOLT	1
10	3030	5/16 X 1-1/4 SH BOLT	1

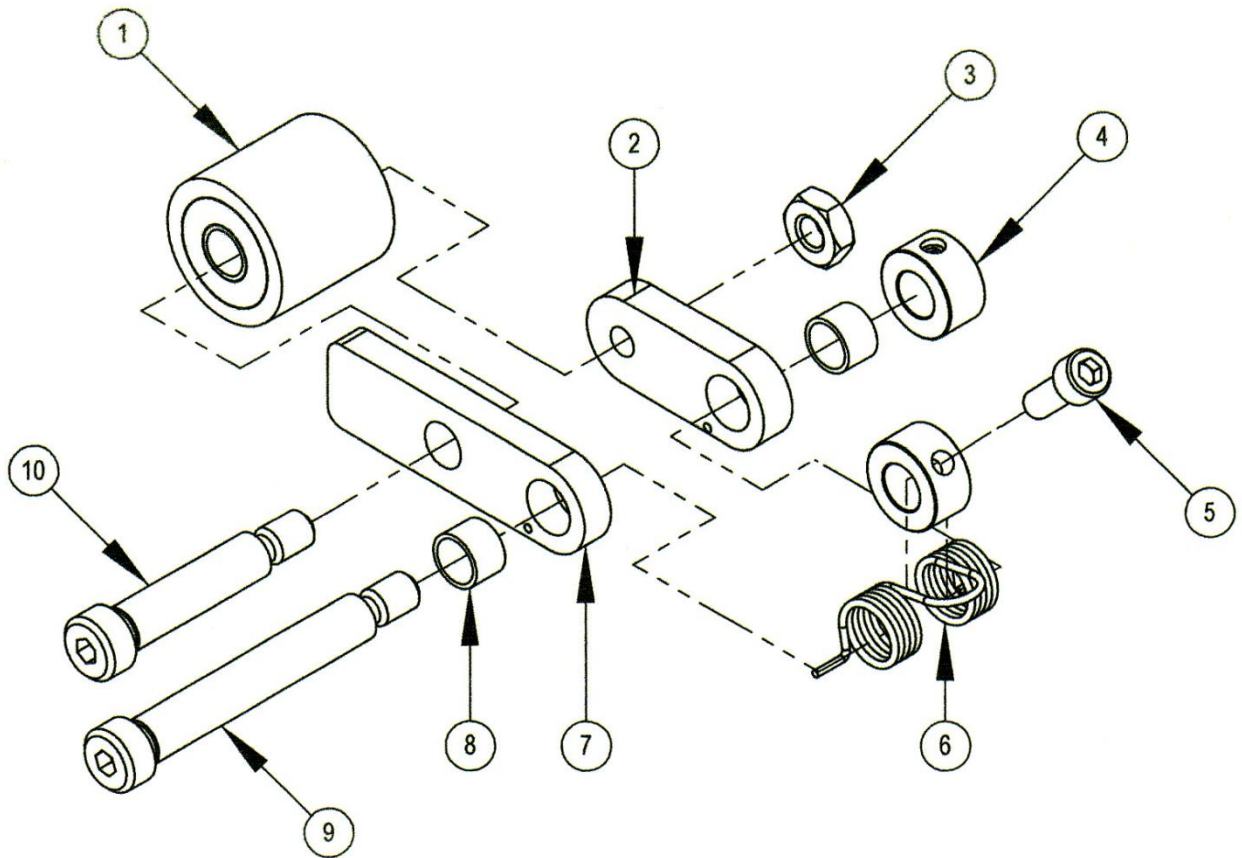


FIG. 7

Assembly Peel Bar Plate

ITEM NO.	PART NUMBER	DESCRIPTION	QTY
1	100010	STAMP PEEL BAR PLATE	1
2	4065	#6L FL BRASS WASHER	2
3	1095	6-32 X 5/8 SHCS BLK	2
4	200011	STAMP PLATE MTG TAB	1
5	100009	PEEL BAR INSERT	1
6	1050	5-40 X 3/8 SHCS BLK	3
7	100011	OUTER PEEL BAR PLATE	1
8	1085	6-32 X 3/16 BHCS BLK	6
9	100555	RETRACT SPRING PLUNGER-STUBBY	1
10	100557	HEX NUT 1/4-20 SPECIAL (INCL. w/ 100555)	1
11	100542	STAMP TENSIONER SPRING	1
12	100505	OVAL APERTURE FIBER CABLE PR	1
13	100023LH / RH	FIBER CABLE MTG BLOCK	1 / 1

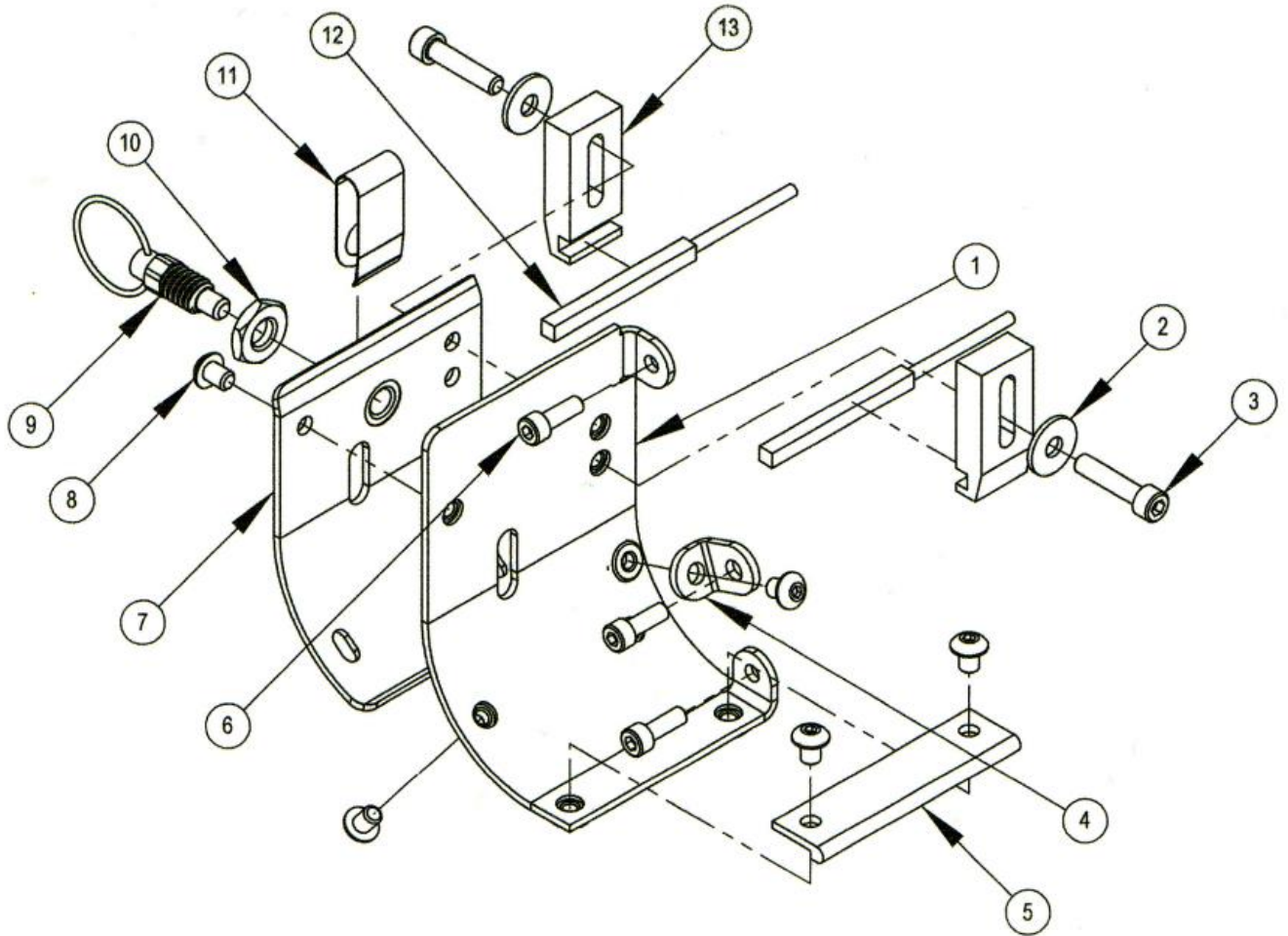


FIG. 8

Assembly Knife Pivot

ITEM NO.	PART NUMBER	DESCRIPTION	QTY
1	100022	MOUNTING BAR	1
2	100018	STRIKER PLATE	1
3	1255	1/4-20 X 1/2 HHMS Z GRADE 5	1
4	100543	DELIVERY BLADE RETURN SPRING	1
5	700009	PIVOT FOR MOUNTING BAR	1
6	8070	BUSHING / AA304-2	1
7	700010	YOKE FOR PIVOT	1
8	1241	1/4-20 X 1/2 LOW SHCS BLK	2
9	3020	1/4 X 3/4 SH BOLT	1
10	233021	DELIVERY BLADE/TUNGSTEN	1
11	4065	#6L FL BRASS WASHER	2
12	1050	5-40 X 3/8 SHCS BLK	2
13	1185	10-24 X 3/8 SHCS BLK	1
14	1190	10-24 X 1/2 SHCS BLK	3

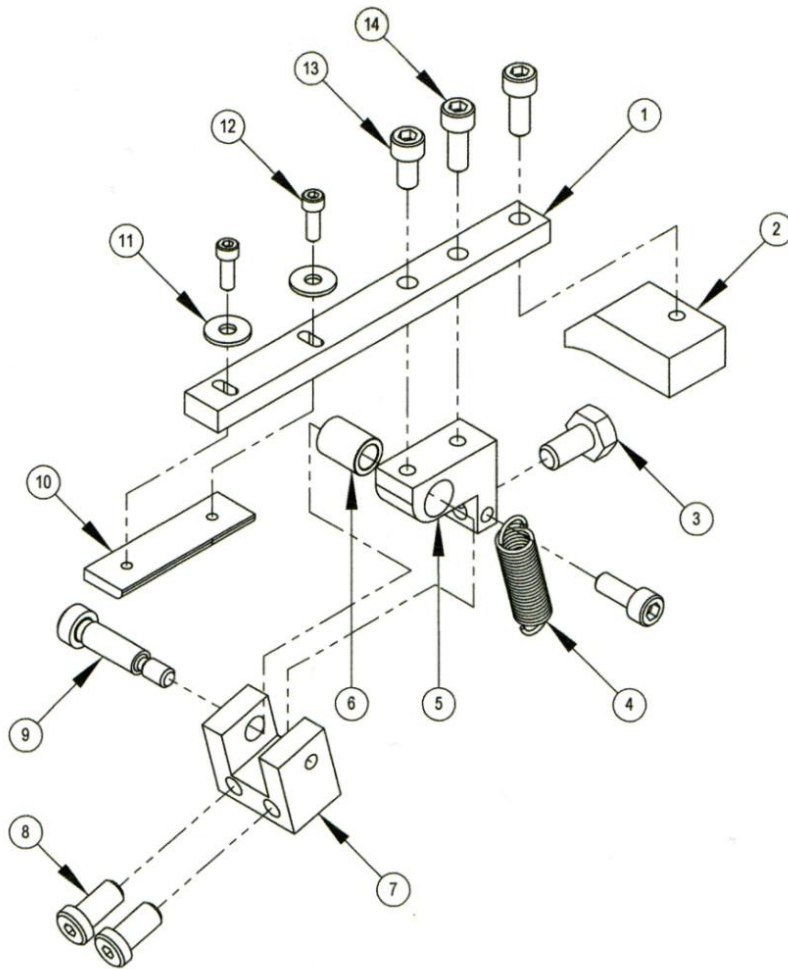


FIG. 9

Assembly Main Shaft

ITEM NO.	PART NUMBER	DESCRIPTION	QTY
1	100014	MAIN SHAFT	1
2	5015	3/16 X 13/32 SQ KEY	1
3	1230	1/4-20 X 1/2 SOC SET KC	1
4	1177	10-32 X 5/8 FHCS BLK	2
5	700024	DRIVE GEAR	1
6	700015	GEAR HUB	1 </td
7	700007	HUB	1
8	100575	T/U ROLLER DRIVE BELT	1
9	100560	TU ROLLER DRIVE PULLEY	1
10	8210	CAM FOLLOWER	1
11	2030	1/4-28 X 1/4 SOC SET CUP	2

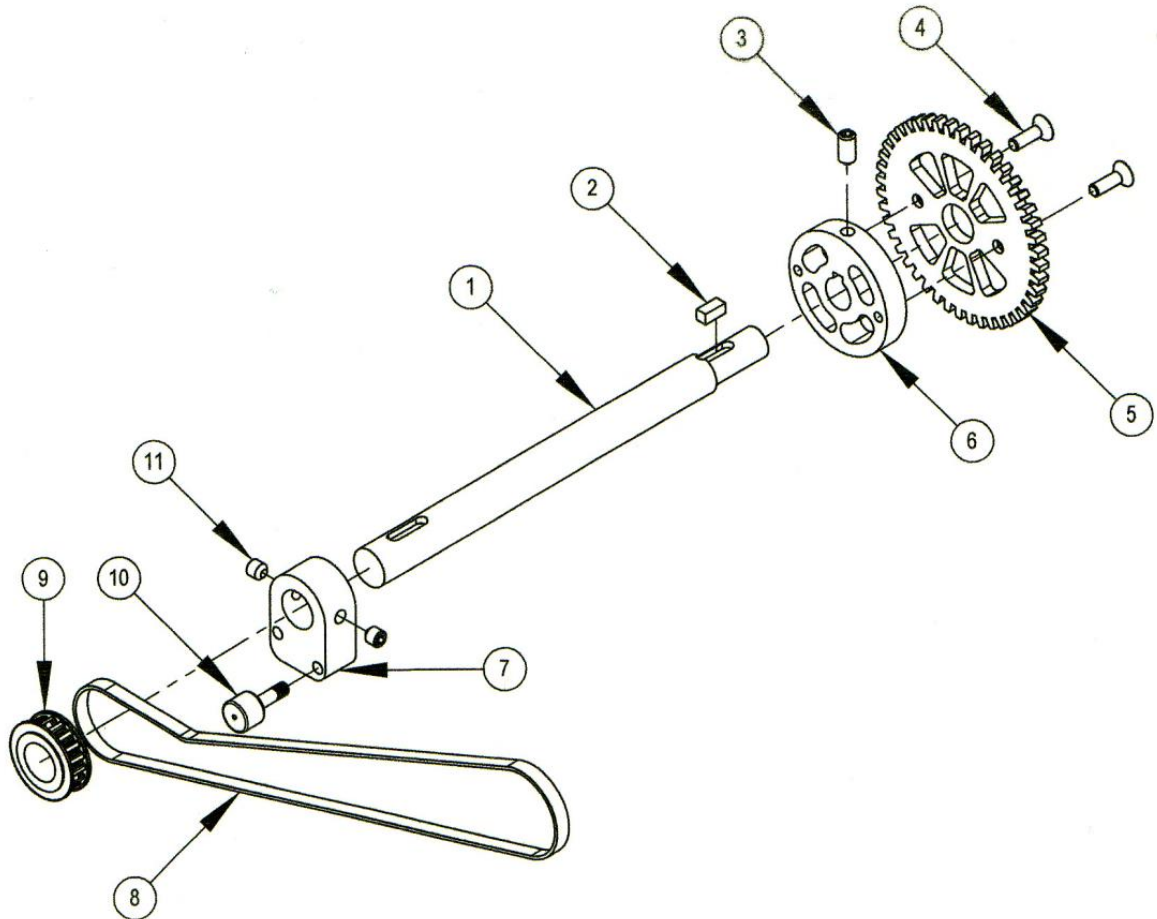


FIG. 10

Assembly Stamp Roll Pivot

ITEM NO.	PART NUMBER	DESCRIPTION	QTY
1	200008	STAMP ROLL SUPPORT BAR	1
2	100017	STAMP ROLL PIVOT SHAFT	1
3	8020	3/8 ID SET COLLAR	1
4	1070	5-40 X 1/2 FHCS BLK	3
5	8120	BUSHING / AA 502	2
6	5065	3/8" SNAP RING	1
7	1065	5-40 X 3/8 FHCS BLK	3
8	733056	SPRING PLUNGER	1
9	733050	COVER HUB	1
10	200029	INNER AND OUTER SHEEVE	2
11	200028	STAMP ROLL PIVOT	1
12	1190	10-24 X 1/2 SHCS BLK	2
13	100063	DANCER ARM ROLLER	1
14	200009	DANCER ARM	1
15	1236	1/4-20 X 3/4 FHCS BLK	1
16	8074	THRUST BEARING / TT 601	1
17	5030	1/8 X 5/8 SPR PIN BLK	1
18	8075	BUSHING / AA397-1	1
19	100545	DANCER ARM SPRING	1
20	1040	5-40 X 1/4 SHCS BLK	1
21	633048	T/U ARM SHAFT	1
22	2010	10-24 X 1/4 SOC SET G	1
23	633046	TENSIONER ADJUST WHEEL	1
24	5028	1/8 X 1/2 SPR PIN Z	1
25	4055	#8 FL WASHER Z	1
26	1200	10-24 X 3/4 SHCS BLK	1

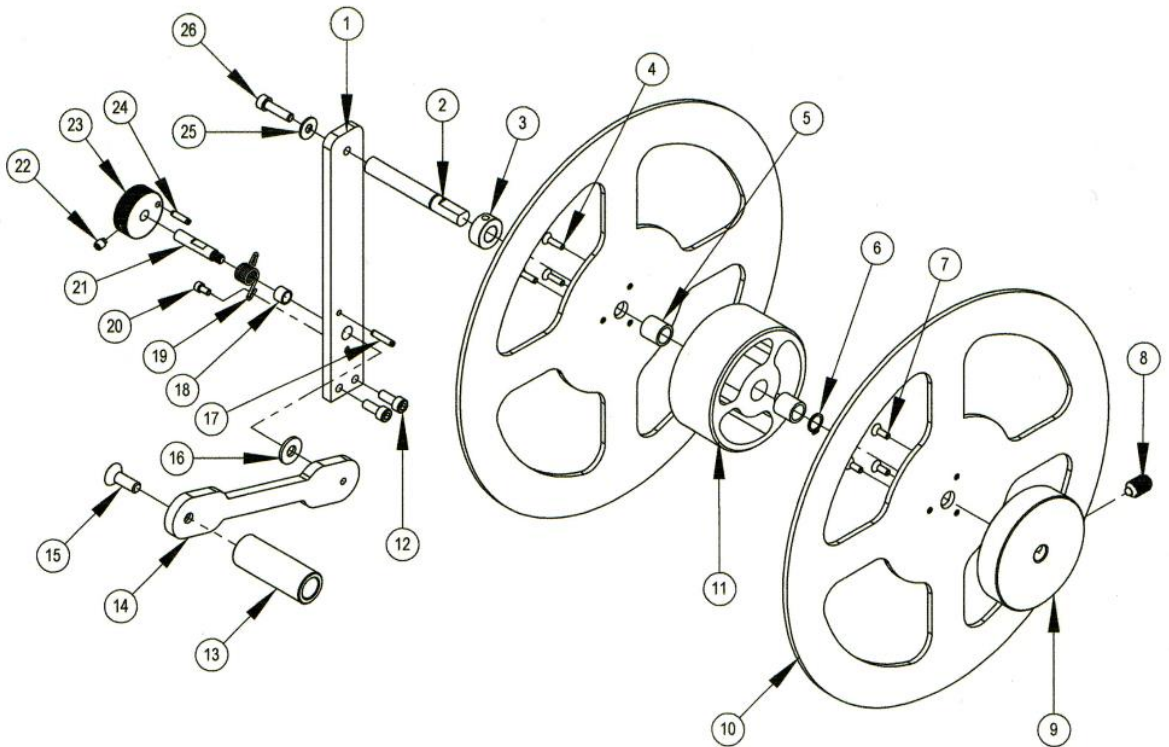


FIG. 11

Assembly Take Up Arm

ITEM NO.	PART NUMBER	DESCRIPTION	QTY
1	200019	TAKE UP ROLLER	1
2	2010	10-24 X 1/4 SOC SET G	3
3	100063	DANCER ARM ROLLER	1
4	100061	T/U DANCER ARM	1
5	1236	1/4-20 X 3/4 FHCS BLK	1
6	100062	T/U ARM SHAFT	1
7	5030	1/8 X 5/8 SPR PIN BLK	1
8	1180	10-24 X 3/4 FHCS BLK	2
9	200006	T/U ROLLER ARM	1
10	8005	1" ALUMINUM HEX STAND OFF	3
11	5028	1/8 X 1/2 SPR PIN Z	1
12	100545	DANCER ARM SPRING	1
13	633046	TENSIONER ADJUST WHEEL	1
14	1040	5-40 X 1/4 SHCS BLK	1
15	8075	BUSHING / AA397-1	2
16	1120	8-32 X 1/2 FHCS BLK	6
17	200007	T/U ROLLER ARM SHORT	1
18	8185	BUSHING / FF-520-9	1
19	100530	T/U ROLLER FRIC CLUTCH	1
20	8180	BUSHING / FF-520-5	1
21	1072	5-40 X 1/4 BHCS BLK	8
22	200038	T/U ROLLER ARM COVER	1
23	100016	T/U ROLLER SHAFT	1
24	8071	THRUST PLATE	1

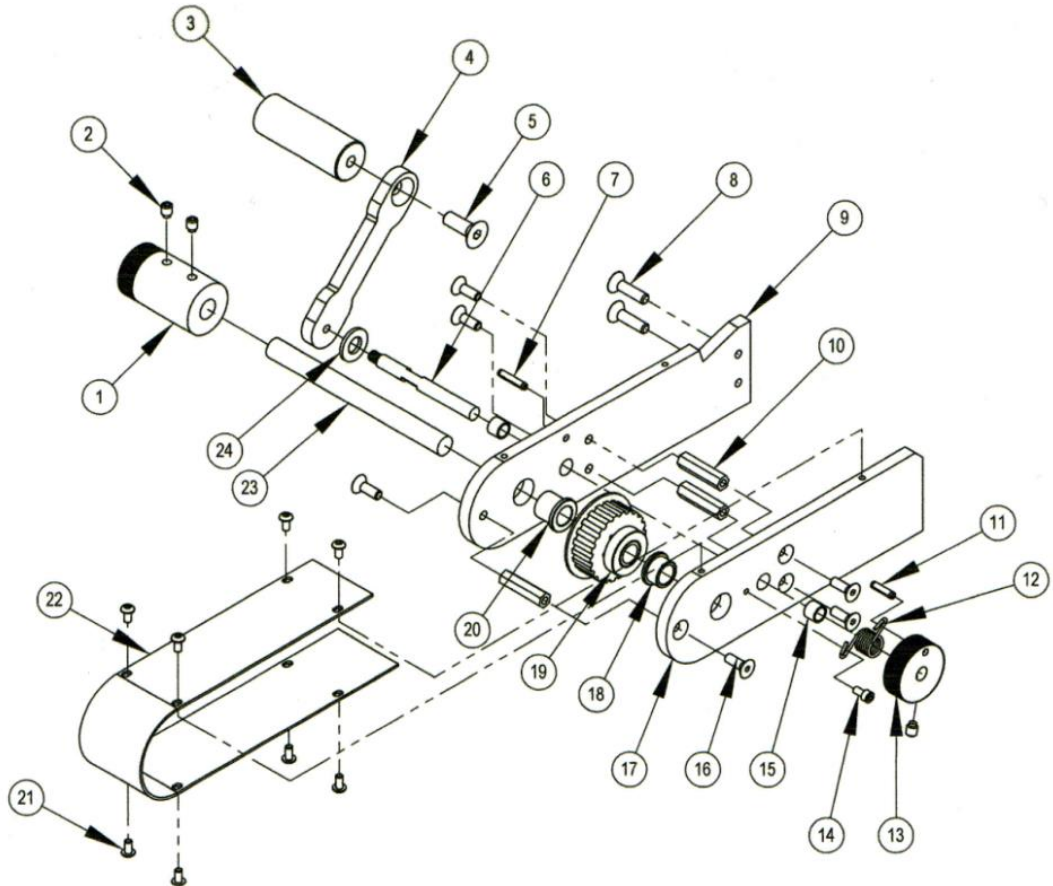


FIG. 12

Assembly Traction Feed Roller

ITEM NO.	PART NUMBER	DESCRIPTION	QTY
1	200020	TRACTION FEED ROLLER	1
2	8185	BUSHING / FF-520-9	1
3	100055	OUTBOARD BEARING PLATE	1
4	1120	8-32 X 1/2 FHCS BLK	2
5	100057	BEARING PLATE SHAFT	2
6	1130	8-32 X 3/4 FHCS BLK	2
7	2010	10-24 X 1/4 SOC SET G	2
8	1224	10-24 X 1/4 SOC SET CUP PT BLK	2
9	100059	MOTOR SHAFT EXTENSION	1

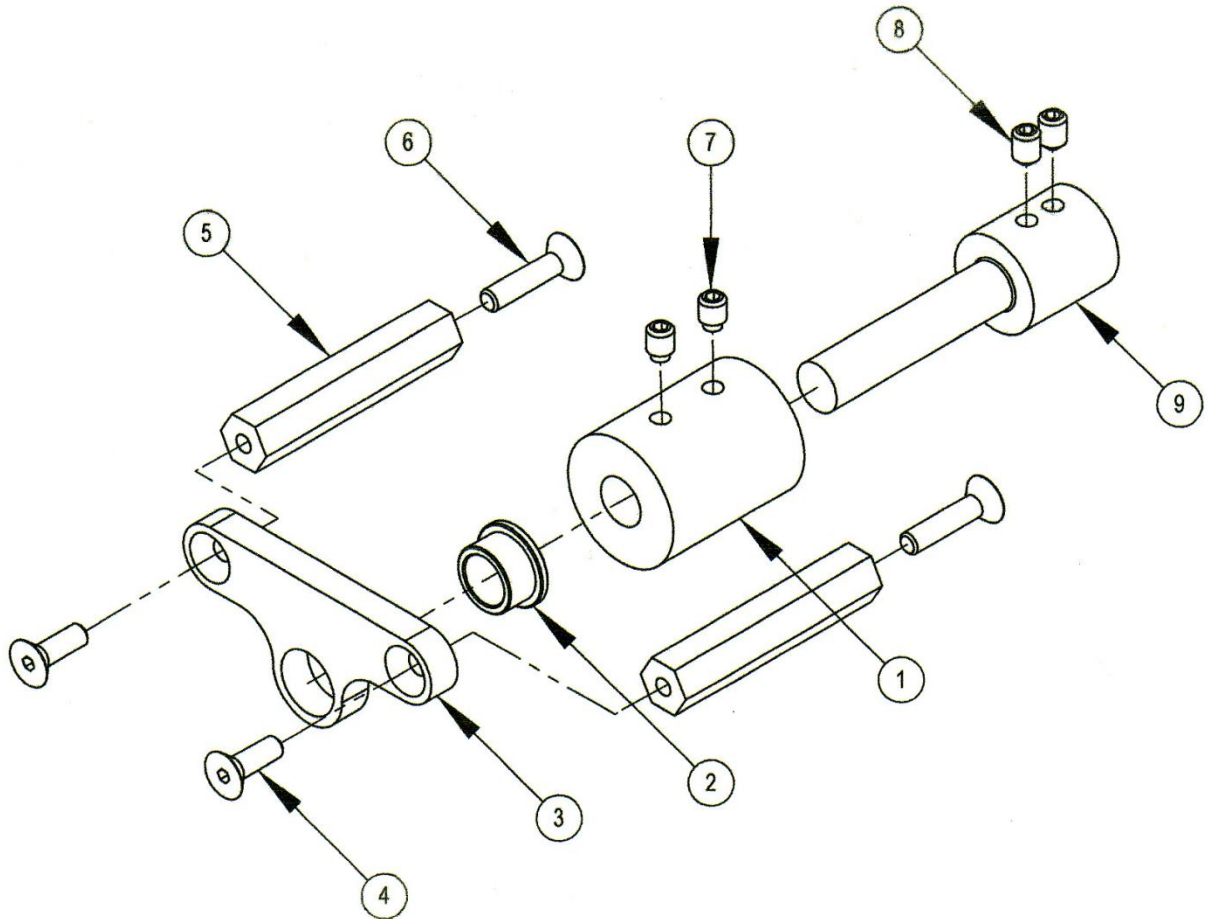


FIG. 13

Assembly Transformer

ITEM NO.	PART NUMBER	DESCRIPTION	QTY
1	100504	TRANSFORMER 115/230V 18V 3.12A	1
2	1222	10-24 X 1 BHCS BLK	2
3	1212	10-24 X 1 SHCS BLK	2
4	100065	TRANSFORMER MTG BRACKET	1

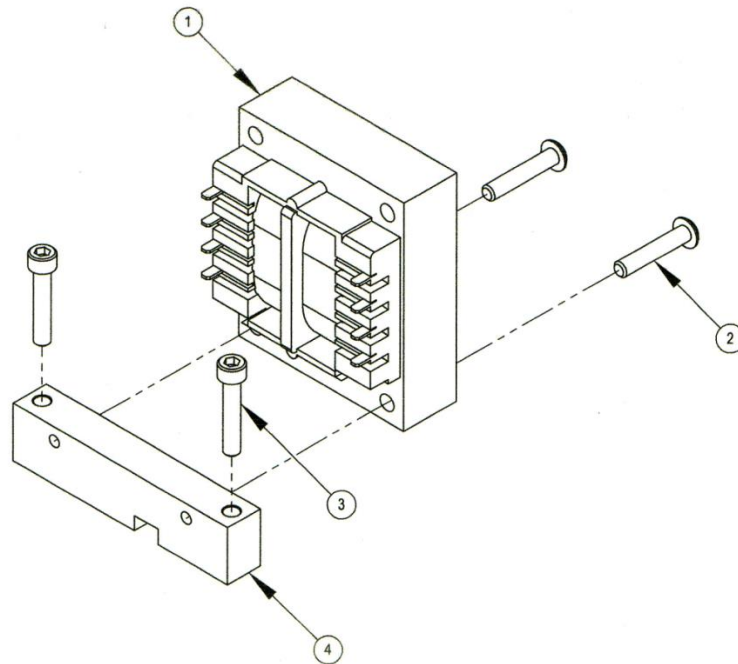


FIG. 14

Assembly Vacuum Head

ITEM NO.	PART NUMBER	DESCRIPTION	QTY
1	100001	VACUUM HEAD	1
2	1230	1/4-20 X 1/2 SOC SET KC	1
3	5010	3/16 X 1/2 SQ KEY	1
4	2010	10-24 X 1/4 SOC SET G	2
5	600026	STAMP PAD	1
6	1035	4-40 X 3/8 FHCS BLK	4
7	100019	VACUUM VALVE	1
8	8066	BARB FITTING 1/4" ID HOSE	1
9	600063	VACUUM VALVE SPRING	3

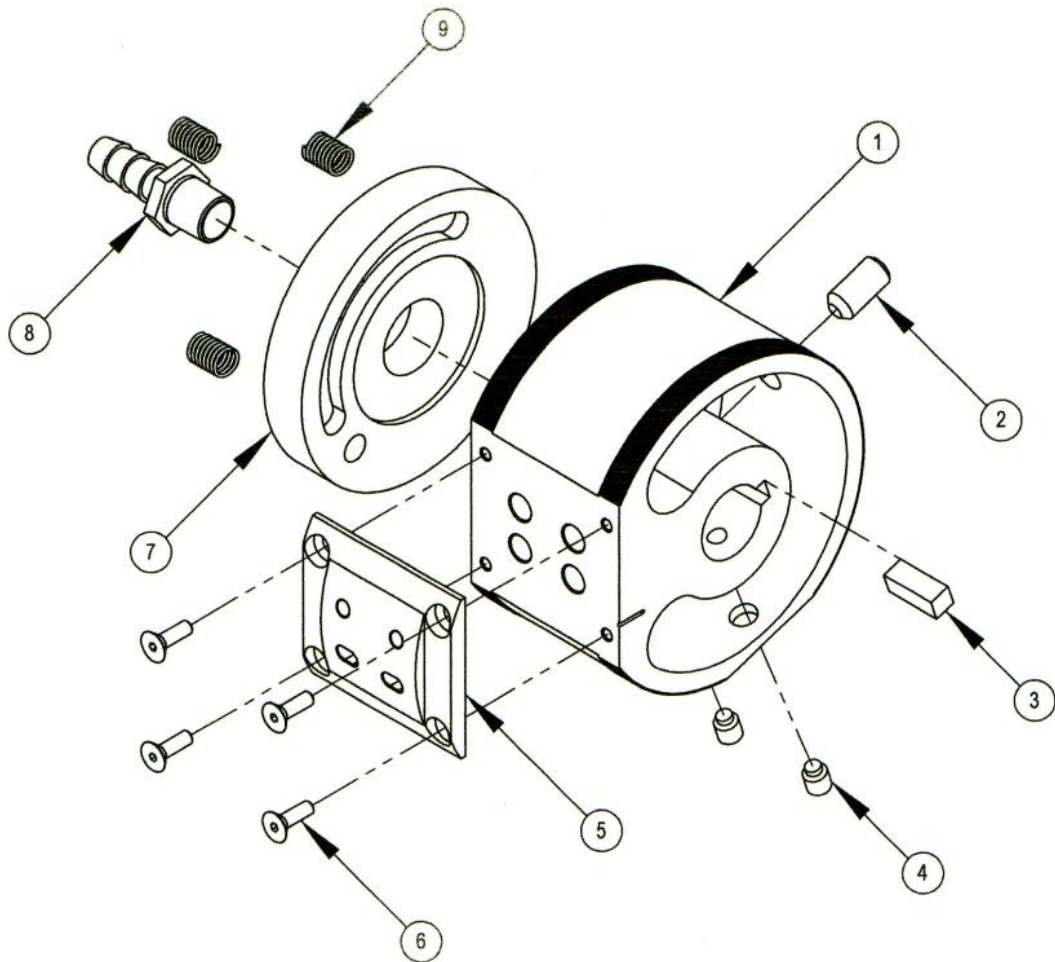


FIG. 15