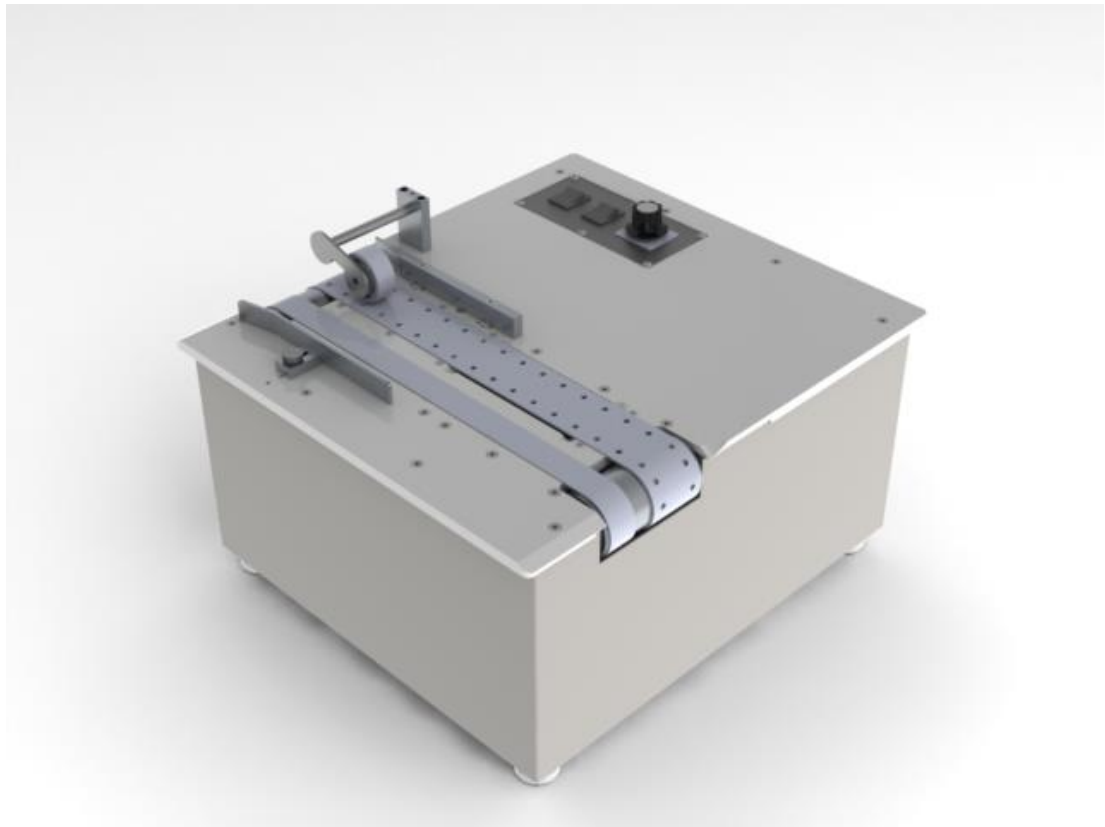




POSTMATIC, INC.

INLINE VACUUM BASE-STANDARD

Parts Manual



Postmatic, Inc.

9405 Holly Street Ste D
Minneapolis, MN 55433

Phone 763-784-6046

Toll Free 888-784-6046

Fax 763-784-9433

TABLE OF CONTENTS

Inline Stamping Base Assembly

Assembly Exterior Top.....	2
Assembly Exterior Top Fig. 1.....	3
Assembly Drive	4
Assembly Drive Input	5
Assembly Drive Input Fig. 2.....	6
Assembly Drive Output	7
Assembly Drive Output Fig. 3.....	8
Assembly Vacuum Chamber	9
Assembly Plate Switch IVB.....	10
Assembly Power Panel	11
Assembly Bottom	12

Assembly Exterior Top

ITEM NO.	PART NUMBER	DESCRIPTION	QTY.
1	366001	PLATE TOP VACUUM	1
2	311060	CHASIS MAIN STD WELDMENT	1
3	1177	10-32 X 5/8 FHCS BLK	8
4	300016	GUIDE ENTRY STATIONARY	1
5	1115	8-32 X 3/8 FHCS BLK	2
6	300015	BRACKET SIDE GUIDE ADJUST	1
7	1200	10-24 X 3/4 SHCS BLK	1
8	7095	KNOB THUMB SCREW #10	1
9	300017	GUIDE ENTRY ADJUST	1
10	300113	ASSY ROLLER INPUT FEED	1
11	300029	SHAFT ROLLER INPUT FEED	1
12	300013	BRACKET RLR STANDOFF	1
13	1224	8-32 X 1/4 SHCS BLK	1
14	1165	8-32 X 1-1/4 SHCS BLK	2
15	1135	8-32 X 1 FHCS BLK	2
16	1137	8-32 X 1/4 BHCS BLK	6
17	SEE FIG. 5	ASSEMBLY PLATE SWITCH IVB	1
18	1174	10-32 X 1/4 BHCS BLK	4
19	300063	PANEL REAR	1

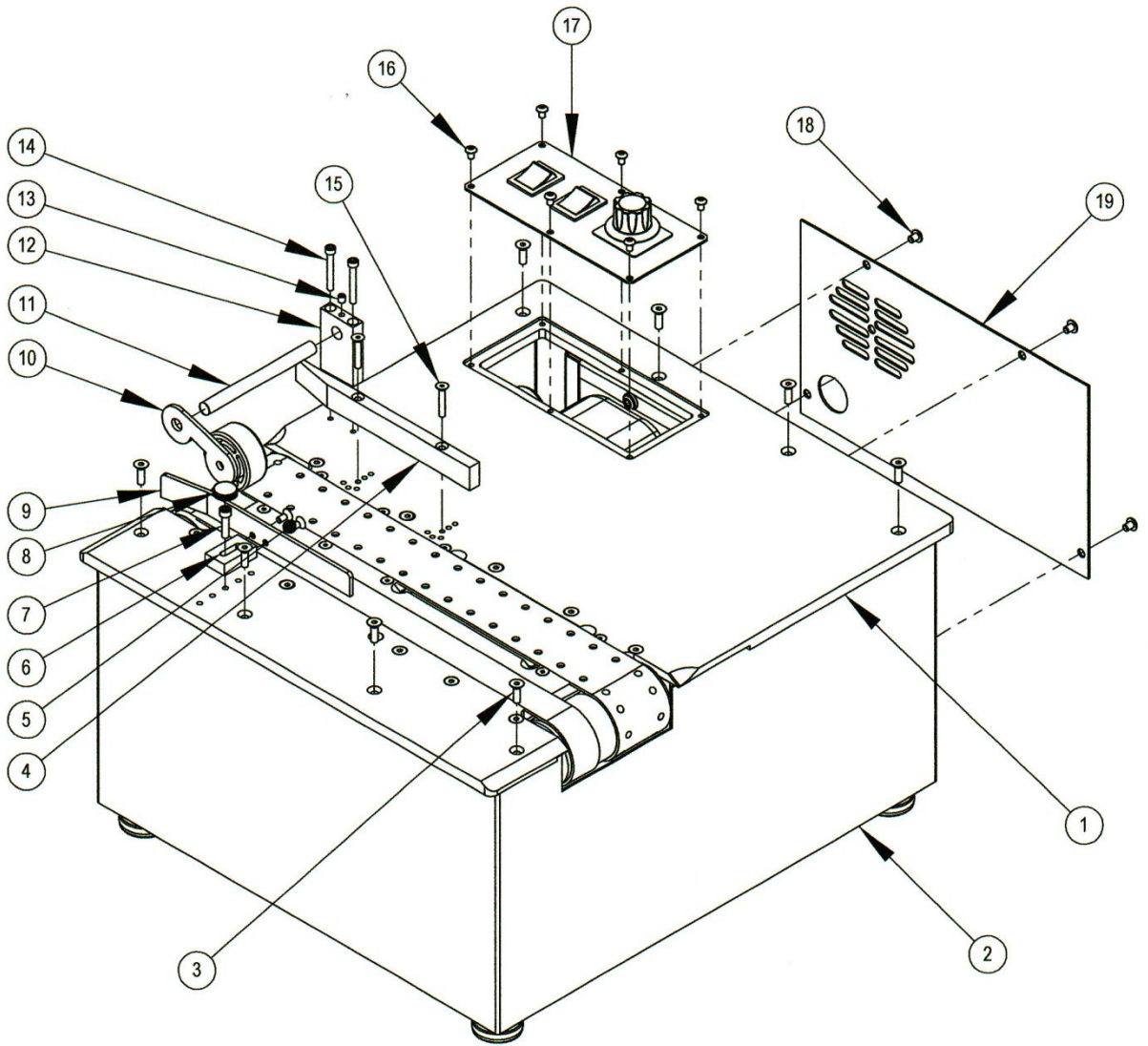
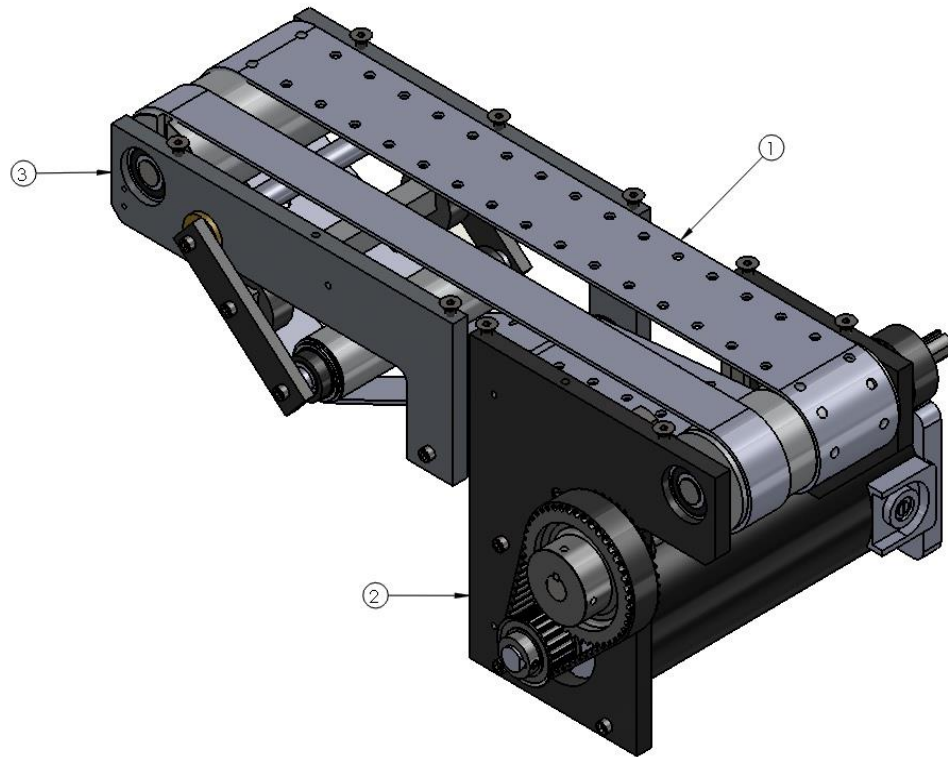


FIG. 1 Assembly Exterior Top

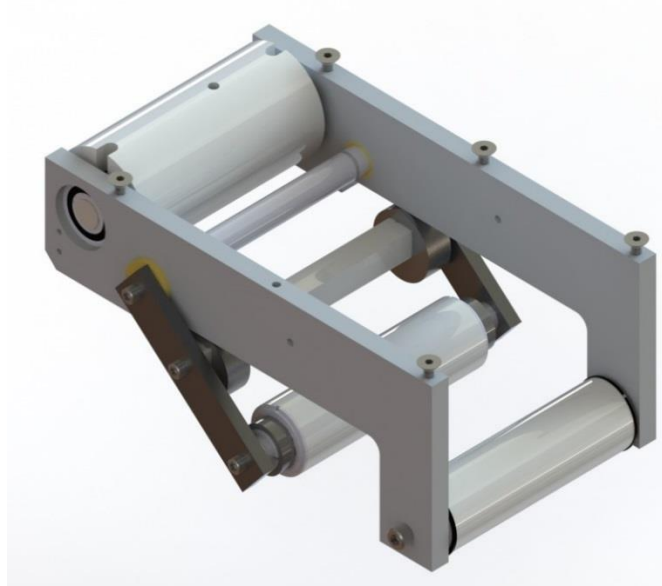
ITEM NO.	PART NUMBER	DESCRIPTION	QTY.
1	300090	BELT TRANSPORT SET 34.75L	1
2	See Fig. 3	DRIVE OUTPUT ASSEMBLY	1
3	See Fig. 2	DRIVE INPUT ASSEMBLY	1



Assembly Drive

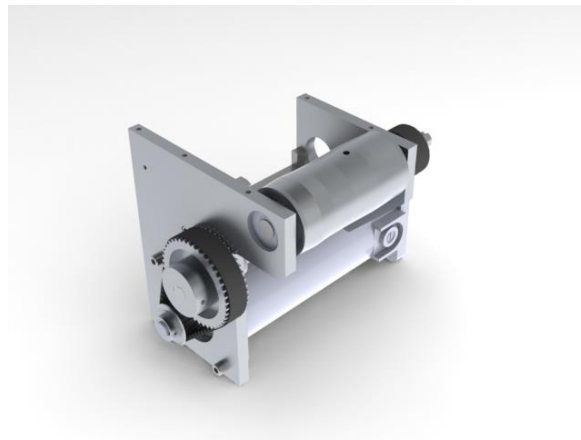
Assembly Drive Input

ITEM NO.	PART NUMBER	DESCRIPTION	QTY.
1	8088	BUSHING FLANGED	2
2	300008	ARM BELT TENSION	2
3	300007	PLATE INPUT LH/RH	2
4	300035	SHAFT ROLLER IDLER	1
5	300036	SHAFT PIVOT/ROLLER IDLER	2
6	300037	SHAFT CAM MOUNTING SQ	1
7	300031	SHAFT ROLLER DRIVE	1
8	300021	ROLLER BELT TENSION	2
9	300020	ROLLER BELT DRIVE FLAT	1
10	8225	BRG SEALED ½ X 1-1/8 W/ COLLAR	4
11	300023	CAM TENSIONER ECCENTRIC	2
12	1178	10-24 5/8 FHCS BLK	5
13	1224	10-24 X ¼ SOC SET CUP PT BLK	4
14	1240	¼-20 X 5/8 SHCS BLK	6
15	5040	3/16 X 1-1/2 SPR PIN BLK	1
16	8022	½ X ¾ X .031 SHIM ROUND	4
17	1245	¼ X ¾ SHCS BLK	2



Assembly Drive Output

ITEM NO.	PART NUMBER	DESCRIPTION	QTY.
1	300070	MOTOR DRIVE 90 VDC 1/6 HP	1
2	300004	PLATE OUTPUT RH	1
3	300003	PLATE OUTPUT LH	1
4	8225	BRG SEALED ½ X 1-1/8 W/COLLAR	4
5	300030	SHAFT JACK	1
6	300032	SHAFT ROLLER DRIVEN	1
7	300022	ROLLER BELT DRIVE CROWNED	1
8	300051	PULLEY TIMING 18HTD W/O HUB	1
9	300054	PULLEY TIMING 22HTD MACHINED	1
10	300056	PULLEY TIMING 44HTD W/HUB	1
11	300052	PULLEY TIMING 20HTD W/HUB	1
12	300093	BELT TIMING HTD 5M51	1
13	300094	BELT TIMING HTD 5M60	1
14	1170	10-32 X ¼ SOC SET CUP PT	2++
15	1178	10-24 X 5/8 FHCS BLK	4
16	8023	½ X ¼ X .093 SHIM ROUND	6
17	5007	1/8 X 1/8 X 1-1/4 SQ KEY	1
18	5006	1/8 X 1/8 X ¼ SQ KEY	2
19	1195	10-24 X 5/8 SHCS BLK	6
20	1250	10-24 X 1 SHCS BLK	3
21	300014	BRACKET BELT GUIDE	1
22	8022	½ X ¼ X .031 SHIM ROUND	2
23	5040	3/16 X 1-1/2 SPR PIN BLK	1
24	300078	BRUSH MOTOR	2



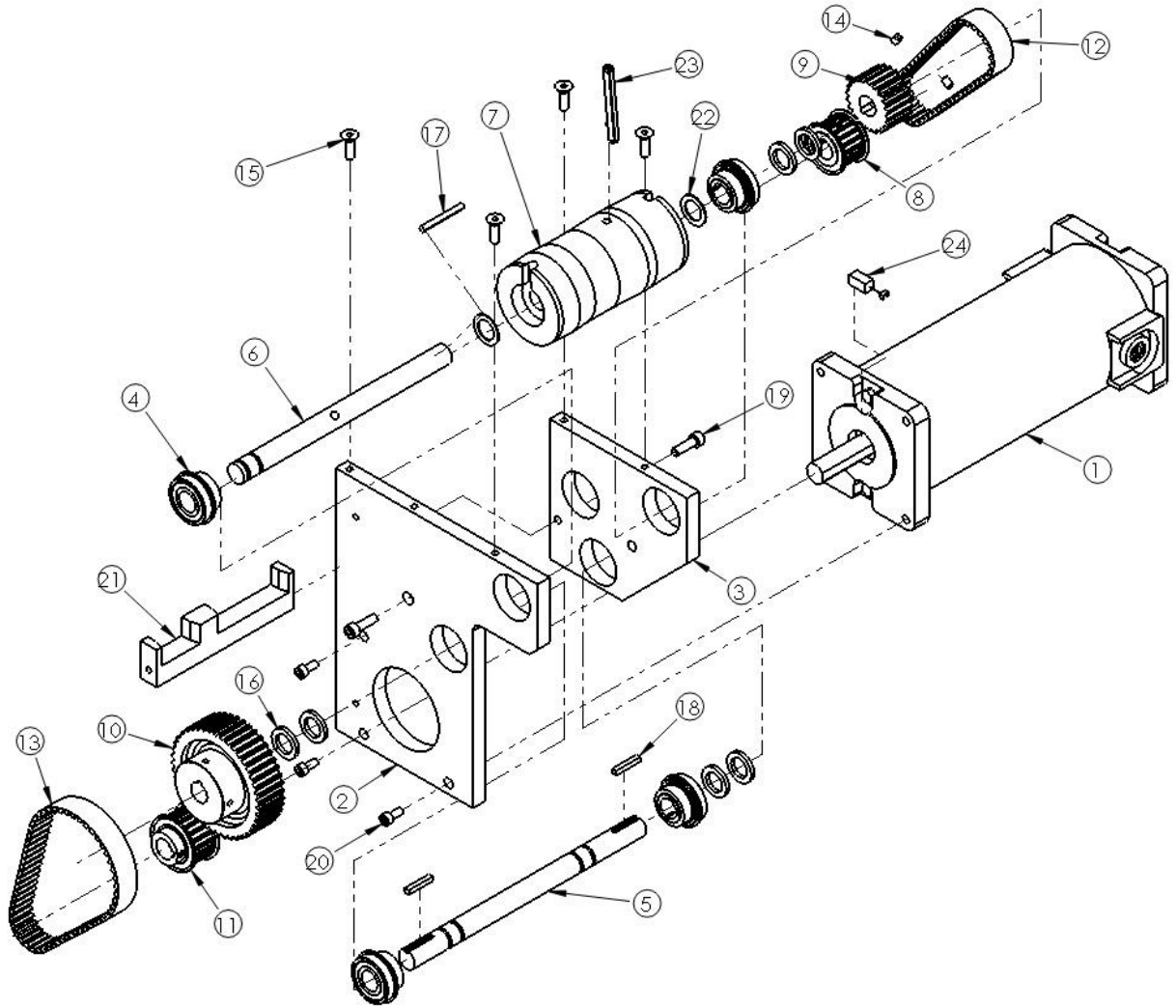


FIG. 3 Assembly Drive Output

Assembly Vacuum Chamber

ITEM NO.	PART NUMBER	DESCRIPTION	QTY.
1	300009	PLATE VACUUM MANIFOLD	1
2	300041	PIPE ELBOW 45 DEGREE 3/4 PVC	1
3	300043	PIPE 3/4 PVC THREADED 2-1/2"L	1
4	300047	TUBE PVC CLEAR 1" X 3-3/8"L	1
5	300046	PIPE 3/4 PVC 2-1/8"L	1
6	300044	PIPE 3/4 PVC 3.0"L	2
7	300040	PIPE ELBOW 90 DEGREE 3/4 PVC	2
8	300042	PIPE 3/4 PVC THREADED 3-3/4"L	1
9	300010	PLATE MANIFOLD INLET	1
10	1220	10-24 X 3/8 BHCS BLK	4

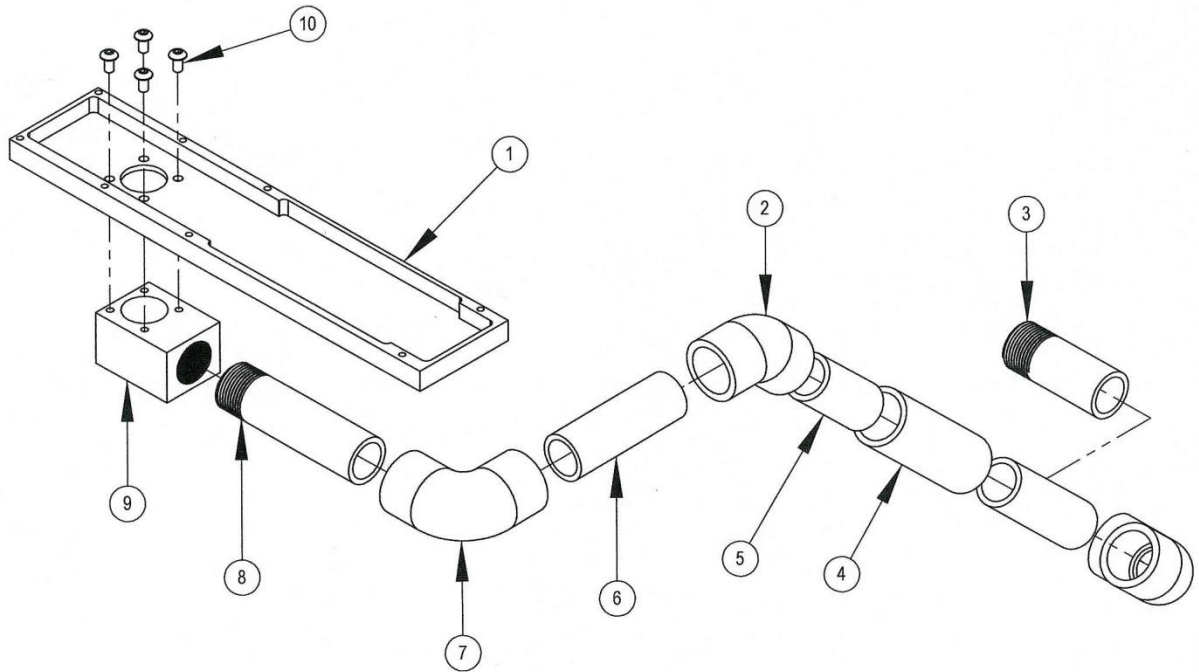


FIG. 4

Assembly Plate Switch IVB W/Rheostat

ITEM NO.	PART NUMBER	DESCRIPTION	QTY.
1	300069	PLATE SWITCH IVB W/RHEOSTAT	1
2	100528	RHEOSTST VARIABLE 5K	1
3	100525	KIT FACE PLATE & KNOB	1
4	100516	SWITCH ROCKER DPDT ON/ON BLK	2
5	1137	8-32 X 1/4 BHCS BLK	6

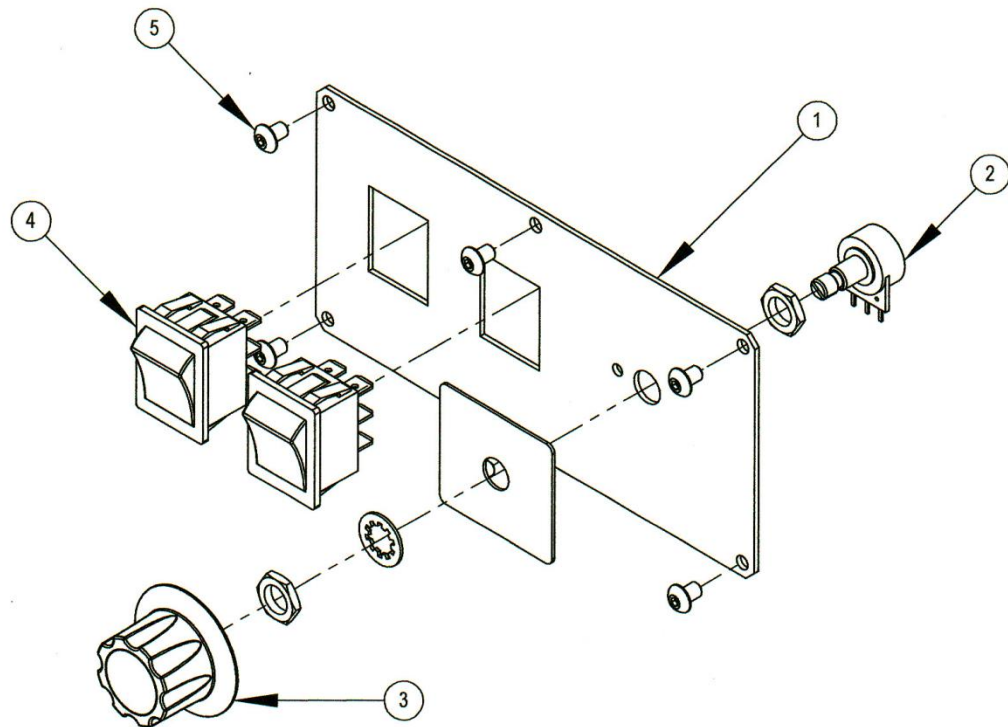


FIG. 5

Assembly Power Panel

ITEM NO.	PART NUMBER	DESCRIPTION	QTY.
1	300064	PANEL RECEPTACLE	1
2	300080	INLET AC W/SWITCH	1
3	1174	10-32 X 1/4 BHCS BLK	4
4	300081	HOLDER FUSE PANEL MOUNT	2
5	100522	FUSE GLASS 5 AMP	1
6	100523	FUSE GLASS 10 AMP	1
7	300083	OUTLET POWER AC	2

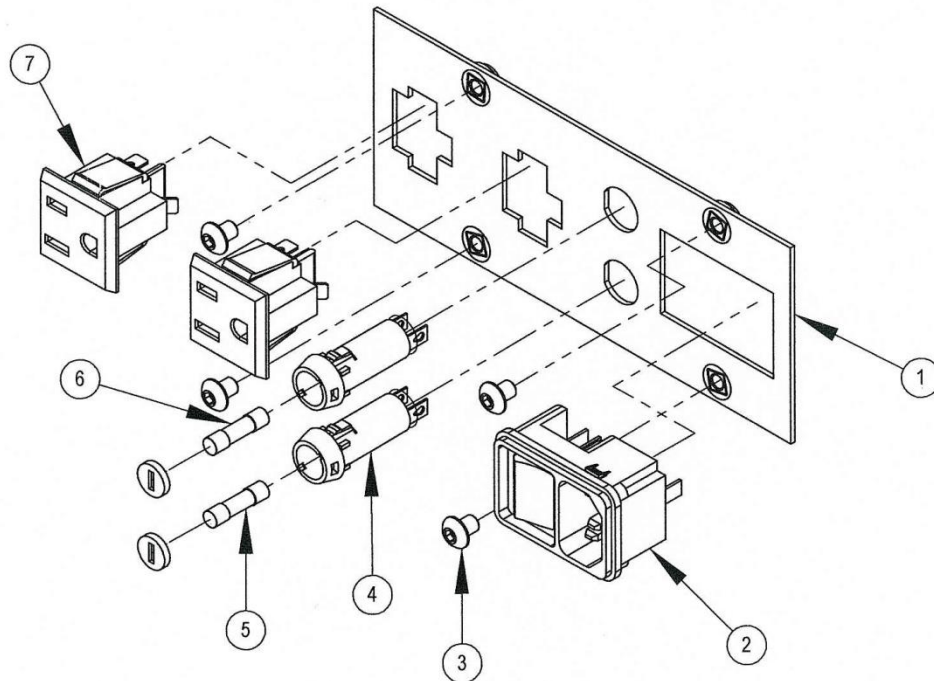


FIG. 6

Assembly Bottom

ITEM NO.	PART NUMBER	DESCRIPTION	QTY.
1	300072	MOTOR BLOWER FUJI 115VAC	1
2	311060	CHASSIS MAIN	1
3	4049	3/8-16 NUT JAM Z	4
4	300095	FOOT LEVELING 3/8-16 X 1-1/2	4
5	300084	BLOCK TERMINAL SURFACE MOUNT	1
6	1095	6-32 X 5/8 SHCS BLK	2
7	300073	CONTROLLER MOTOR DRIVE DC	1
8	1150	8-32 X 3/8 SHCS BLK	2
9	1280	3/8-16 X 3/4 BOLT W/LOCKING FL	2

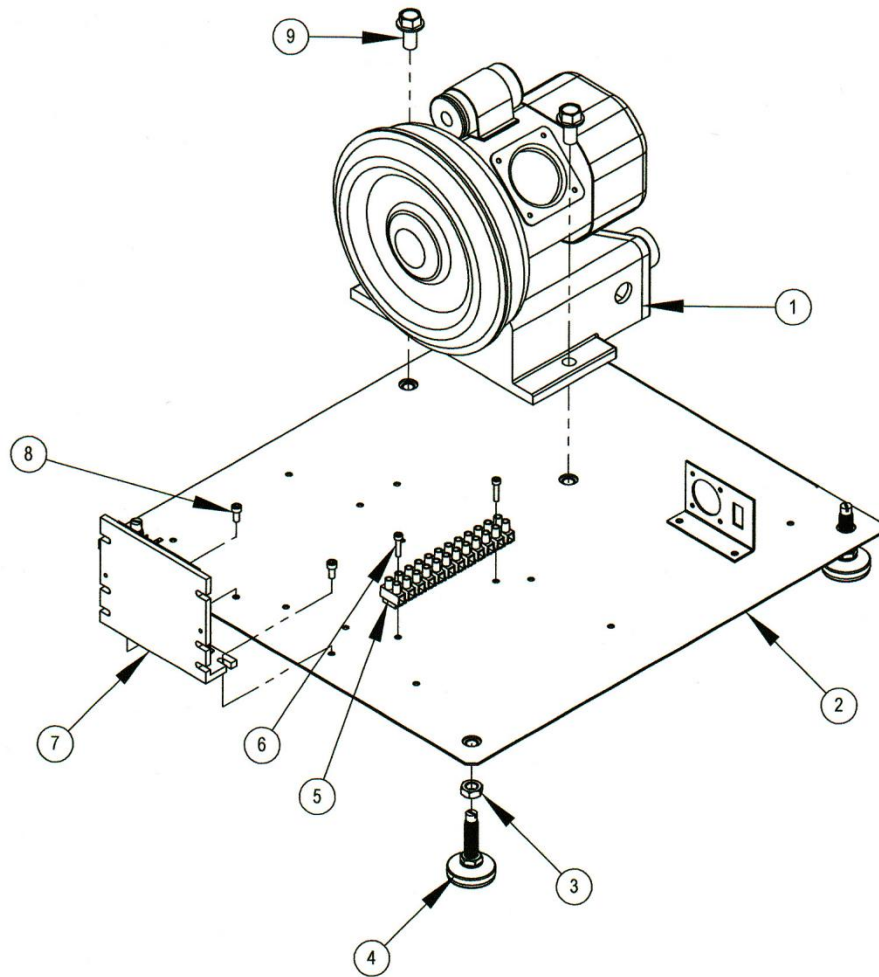


FIG. 7

Assembly Roller Input Feed

ITEM NO.	PART NUMBER	DESCRIPTION	QTY.
1	300116	ARM ROLLER INPUT FEED	1
2	300117	BUSHING ARM INPUT FEED RLR	2
3	4060	¼ WASHER Z	1
4	4061	¼ WASHER LOCK Z	1
5	8203	BEARING ROLLER R-4 DBL SEAL	1
6	300118	ROLLER INPUT FEED	1
7	1233	¼-20 X 5/8 BHCS BLK	1
8	1138	8-32 X 3/8 BHCS BLK	1
9	300115	COLLAR INPUT FEED ROLLER	1
10	1226	¼-20 X 3/8 SOC SET FP	1
11	300114	SPRING EXTENSION	1
12	300119	O-RING SQUARE INPUT FEED RLR	1
13	4020	8-32 NUT Z	1
14	4040	¼-20 JAM NUT Z	1
15	300029	SHAFT ROLLER INPUT FEED	1

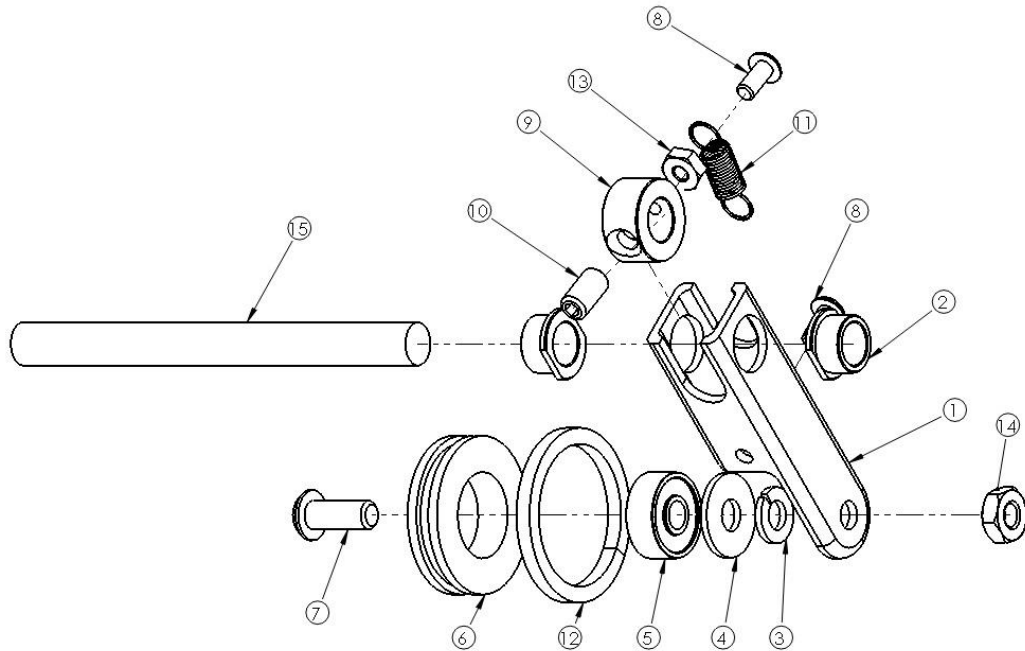


FIG. 8