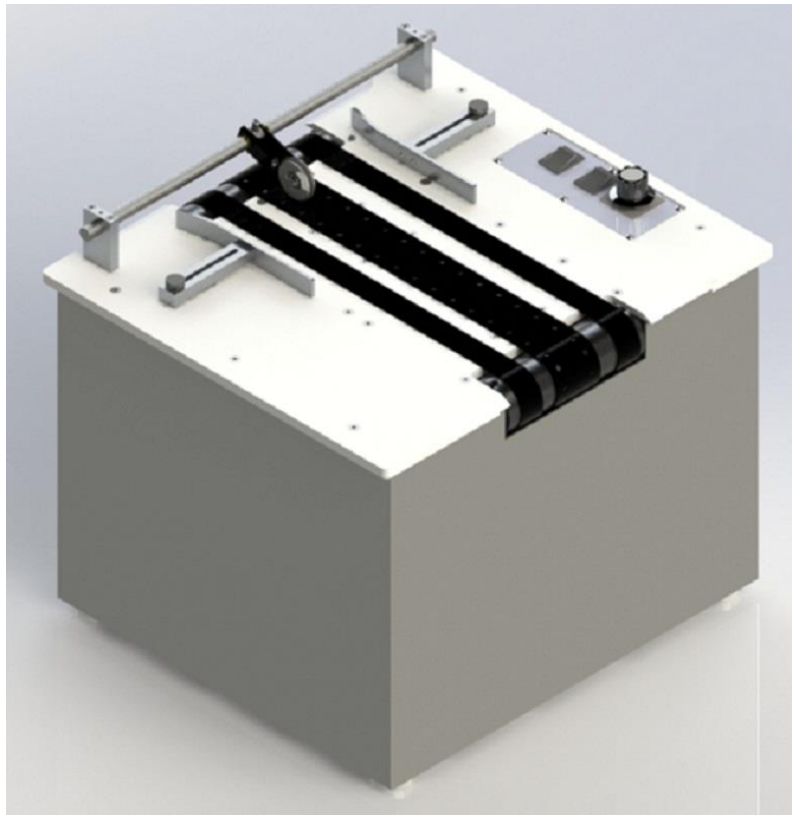




POSTMATIC, INC.

INLINE VACUUM BASE - 10 X 13"

Parts Manual



Postmatic, Inc.

9405 Holly Street Ste D

Minneapolis, MN 55433

Phone 763-784-6046

Toll Free 888-784-6046

Fax 763-784-9433

TABLE OF CONTENTS

Inline Vacuum Base Assembly

Assembly Exterior Top.....	2
Assembly Exterior Top Fig. 1.....	3
Assembly Drive	4
Assembly Drive Input	5
Assembly Drive Input Fig. 2.....	6
Assembly Drive Output	7
Assembly Drive Output Fig. 3.....	8
Assembly Vacuum Chamber	9
Assembly Plate Switch IVB.....	10
Assembly Power Panel	11
Assembly Bottom	12

Assembly Exterior Top

ITEM NO.	PART NUMBER	DESCRIPTION	QTY.
1	900060	CHASSIS MAIN 10X13 16"	1
2	900101	PLATE TOP 10X13 16"	1
3	900090	BELT TRANSPORT SET 34.75"L	1
4	300069	PLATE SWITCH IVB W/ RHEOSTAT	1
5	900015	BRACKET SIDE GUIDE ADJ 10X13	2
6	1177	10-32 X 5/8 FHCS BLK	5
7	1115	8-32 X 3/8 FHCS BLK	4
8	300017	GUIDE ENTRY ADJUST	2
9	1200	10-24 X 3/4 SHCS BLK	2
10	1165	8-32 X 1-1/4 SHCS BLK	4
11	7095	KNOB THUMB SCREW #10	2
12	300063	PANEL REAR	1
13	1174	10-32 X 1/4 BHCS BLK	4
14	1137	8-32 X 1/4 BHVCS BLK	6
15	300013	BRACKET RLR STAND-OFF	2
16	488004	SHAFT CROSS PRINT HEAD	1
17	300113	ASSY ROLLER INPUT FEED (SEE FIG. 8)	1

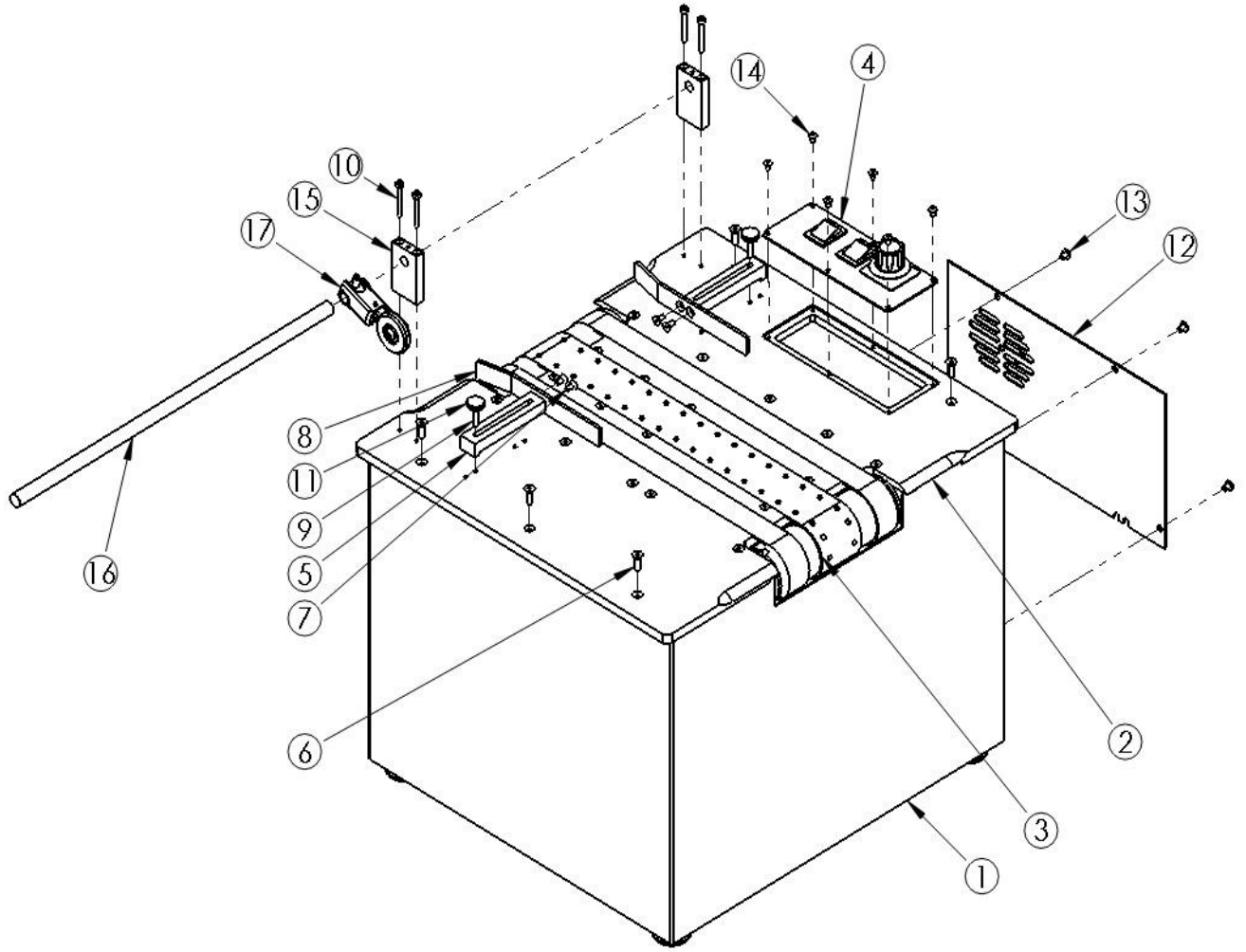
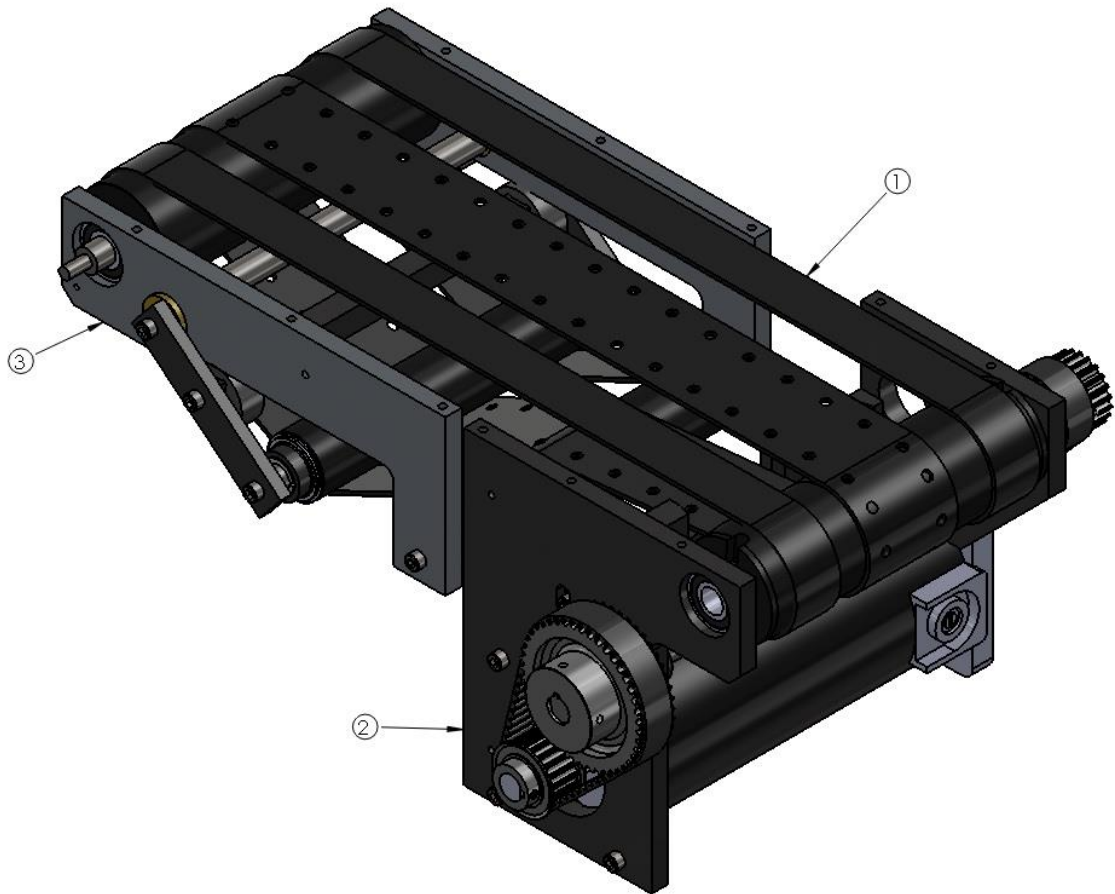


FIG. 1 Assembly Exterior Top

ITEM NO.	PART NUMBER	DESCRIPTION	QTY.
1	900090	BELT TRANSPORT SET 34.75L	1
2	See Fig. 3	DRIVE OUTPUT ASSEMBLY	1
3	See Fig. 2	DRIVE INPUT ASSEMBLY	1



Assembly Drive

Assembly Drive Input

ITEM NO.	PART NUMBER	DESCRIPTION	QTY.
1	300007	PLATE INPUT LH/RH	2
2	8225	BRG SEALED ½ X 1-1/8 W/ COLLAR	4
3	8088	BUSHING FLANGED	2
4	900004	ROLLER BELT TENSION 10X13	2
5	300008	ARM BELT TENSION	2
6	300023	CAM TENSIONER ECCENTRIC	2
7	900005	SHAFT CAM MTG SQ 10X13	1
8	900020	ROLLER BELT DR FLAT 10X13	1
9	900038	SHAFT AIR DR ENCODER 10X13	1
10	8022	½ X ¾ X .031 SHIM ROUND	4
11	5040	3/16 X 1-1/2 SPR PIN BLK	1
12	900036	SHAFT PIVT/RLR IDLER 10X13	2
13	8224	BEARING SEALED ½ X 1-1/8 RNG	2
14	900035	SHAFT ROLLER IDLER 10X13	1
15	1240	¼-20 X 5/8 SHC BLK	6
16	1245	184 X ¾ SHC BLK	2
17	1224	10-24 X ¼ SOC SET CUP PT	4
18	1178	10-24 5/8 FHCS BLK	4

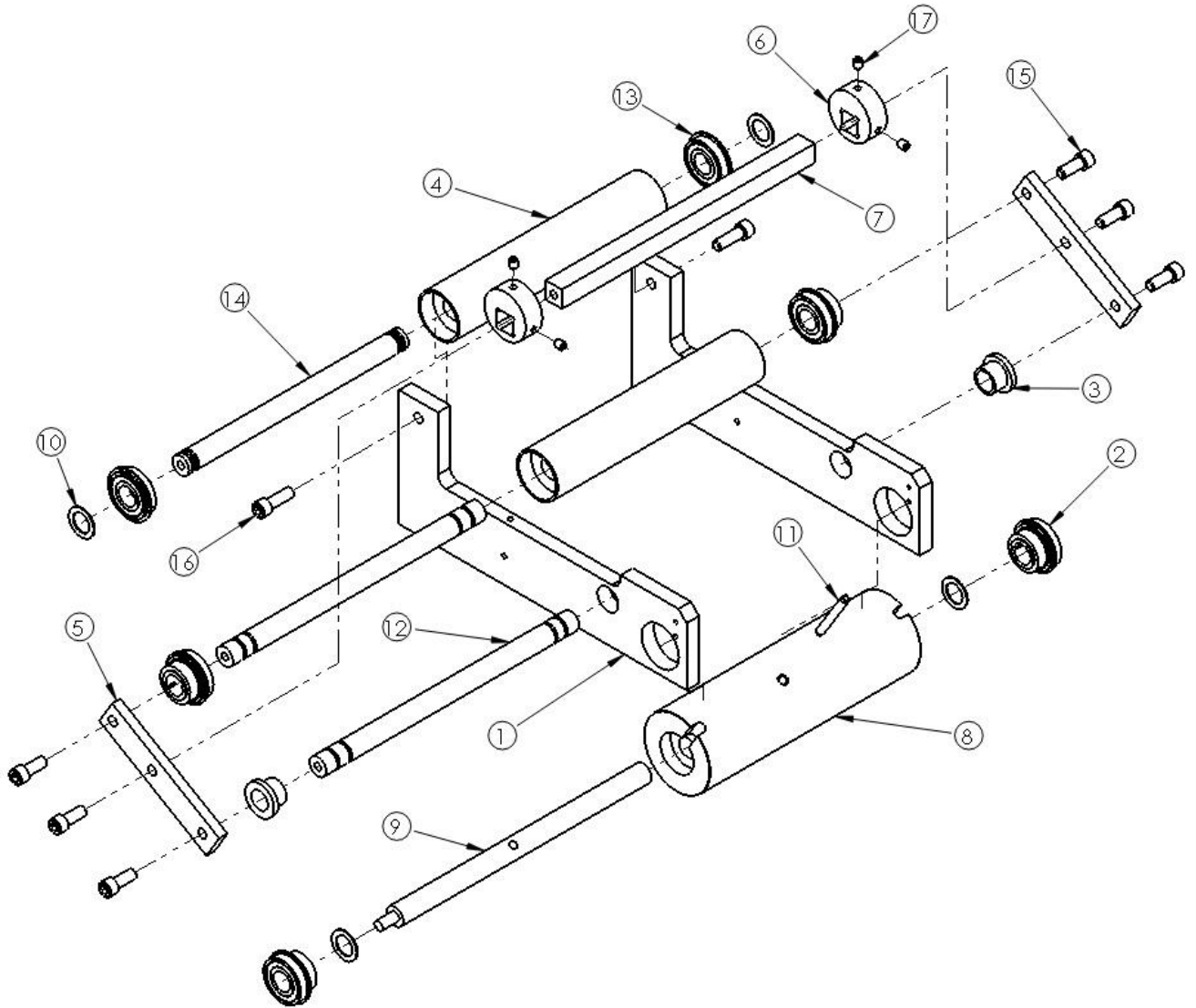


FIG. 2 Assembly Drive Input

Assembly Drive Output

ITEM NO.	PART NUMBER	DESCRIPTION	QTY.
1	300004	PLATE OUPUT RH	1
2	8225	BRG SEALED ½ X 1-1/8 W/ COLLAR	4
3	300003	PLATE OUTPUT LH	1
4	900022	ROLLER BELT DR CROWNED 10X13	1
5	900030	SHAFT JACK 10X13	1
6	300056	PULLEY TIMING 44HTD W/ HUB	1
7	300051	PULLEY TIMING 18HTD W/O HUB	1
8	300070	MOTOR DRIVE 90 VDC 1/6 HP	1
9	300052	PULLEY TIMING 20HTD W/O HUB	1
10	8022	½ X ¾ X .031 SHIM ROUND	2
11	8023	½ X ¾ .093 SHIM ROUND	6
12	300032	SHAFT ROLLER DRIVEN	1
13	300054	PULLEY TIMING 22HTD MACHINED	1
14	1178	10-24 X 5/8 FHCS BLK	4
15	5040	3/16 X 1-1/2 SPR PIN BLK	1
16	1170	10-32 X ¼ SOC SET PT CUP	2
17	5006	1/8 X 1/8 X ¼ KEY	3
18	1250	¼-20 X 1 SHCS BLK	3
19	300094	BELT TIMING HTD 5M60	1
20	300093	BELT TIMING HTD 5M51	1

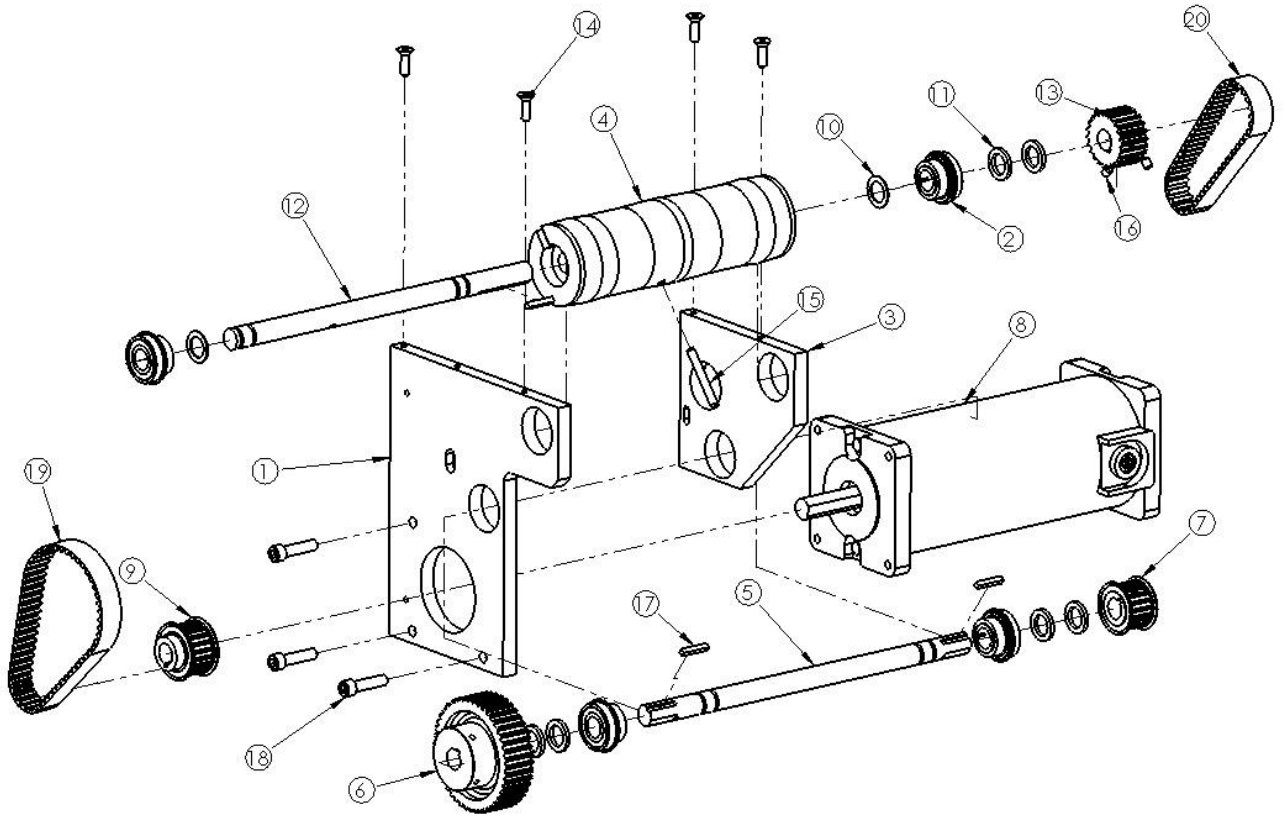


FIG. 3 Assembly Drive Output

Assembly Vacuum Chamber

ITEM NO.	PART NUMBER	DESCRIPTION	QTY.
1	300009	PLATE VACUUM MANIFOLD	1
2	300010	PLATE MANIFOLD INLET	1
3	300042	PIPE 3/4" PVC THREADED 3-3/4"	1
4	300040	PIPE ELBOW 90 DEGREE 3/4" PVC	2
5	900044	PIPE 3/4" PVC 4-3/4" L	1
6	300044	PIPE 3/4" PVC 3.0" L	1
7	1220	10-24 X 3/8 BHCS BLK	4

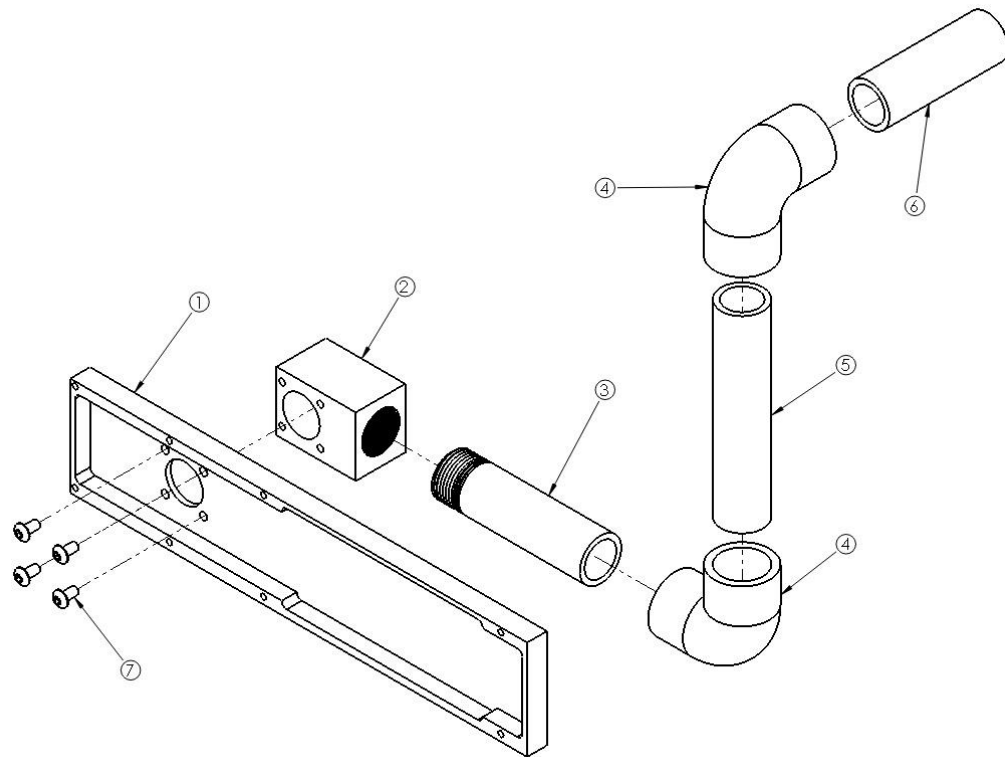


FIG. 4

Assembly Plate Switch IVB W/Rheostat

ITEM NO.	PART NUMBER	DESCRIPTION	QTY.
1	900014	PLATE SWITCH IVB 10x13 W/RHEOSTAT	1
2	100528	RHEOSTST VARIABLE 5K	1
3	100525	KIT FACE PLATE & KNOB	1
4	100516	SWITCH ROCKER DPDT ON/ON BLK	2
5	1137	8-32 X 1/4 BHCS BLK	4

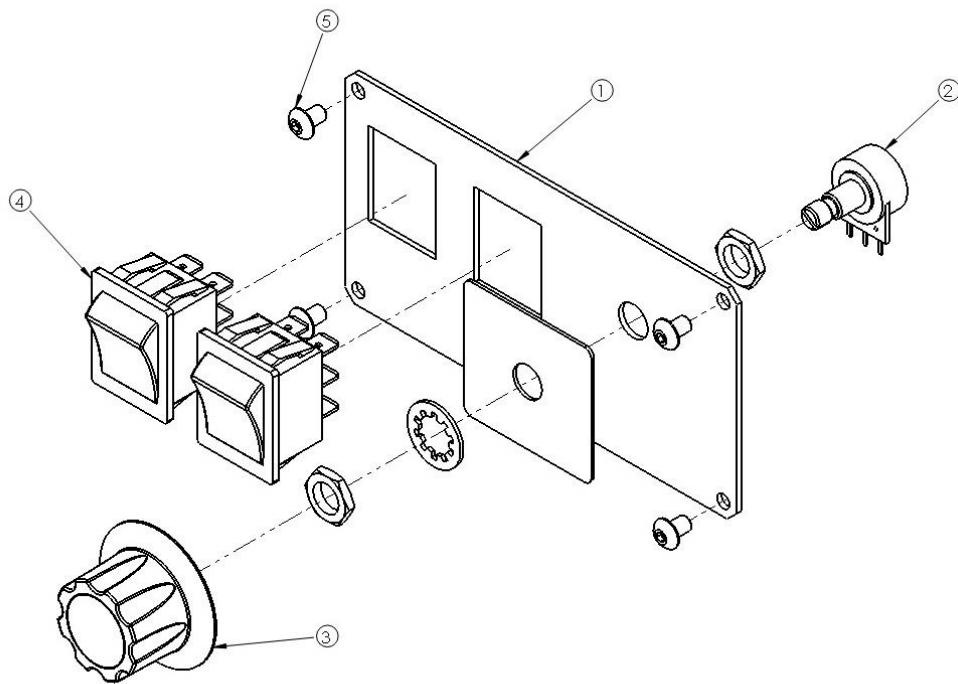


FIG. 5

Assembly Power Panel

ITEM NO.	PART NUMBER	DESCRIPTION	QTY.
1	300064	PANEL RECEPTACLE	1
2	300080	INLET AC W/SWITCH	1
3	1174	10-32 X 1/4 BHCS BLK	4
4	300081	HOLDER FUSE PANEL MOUNT	2
5	100522	FUSE GLASS 5 AMP	1
6	100523	FUSE GLASS 10 AMP	1
7	300083	OUTLET POWER AC	2

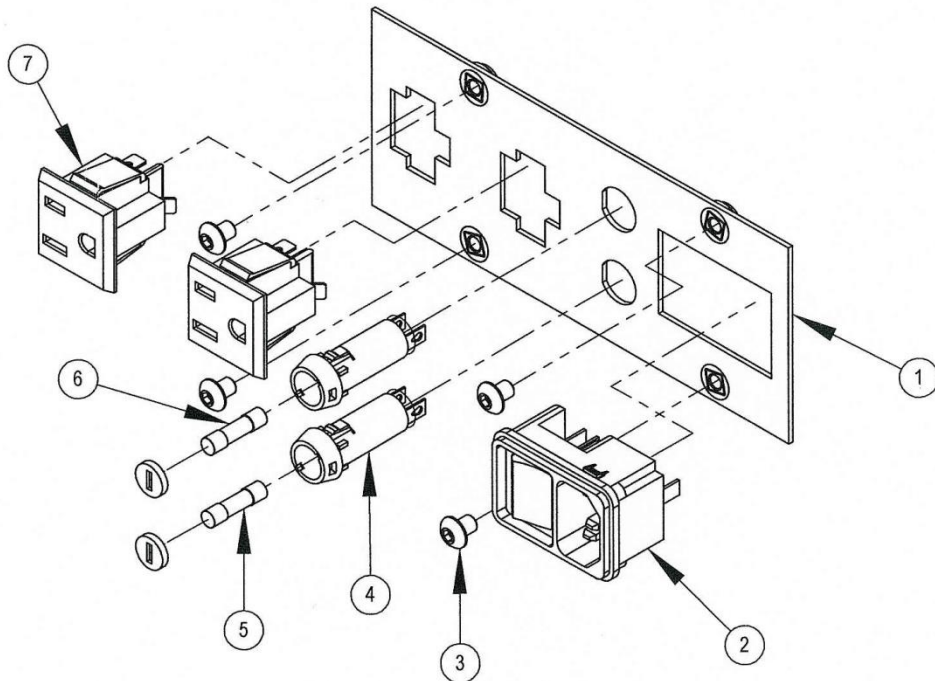


FIG. 6

Assembly Bottom

ITEM NO.	PART NUMBER	DESCRIPTION	QTY.
1	300060	CHASSIS MAIN	1
2	300072	MOTOR BLOWER FUJI 115 VAC	1
3	1280	3/8-16 X 3/4 BOLT W/ LOCKING FL	2
4	300084	BLOCK TERMINAL SURFACE MOUNT	1
5	300073	CONTROLLER MOTOR DRIVE DC	1
6	300066	BRACKET WIRE HARNESS PLUG MTG	1
7	1095	6-32 X 5/8 SHCS BLK	2
8	1155	8-32 X 1/2 SHCS BLK	2
9	1150	8-32 X 3/8 SHCS BLK	2
10	4049	3/8-16 NUT JAM Z	4
11	300095	BASE LEVELING MOUNT	4

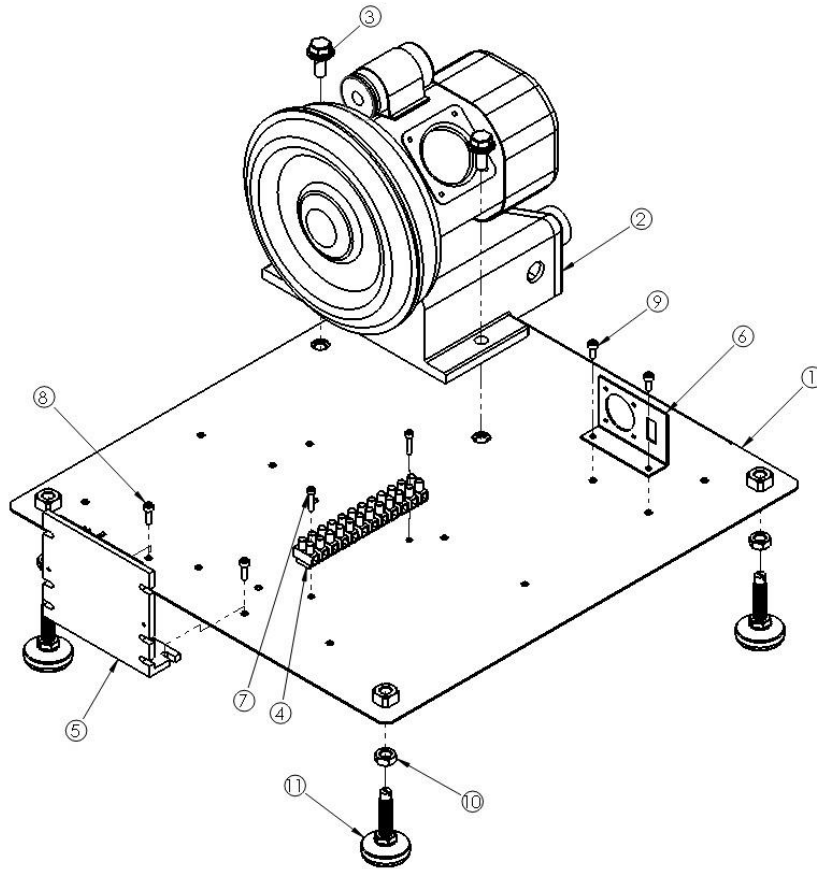


FIG. 7

Assembly Roller Input Feed

ITEM NO.	PART NUMBER	DESCRIPTION	QTY.
1	300116	ARM ROLLER INPUT FEED	1
2	300117	BUSHING ARM INPUT FEED RLR	2
3	4060	¼ WASHER Z	1
4	4061	¼ WASHER LOCK Z	1
5	8203	BEARING ROLLER R-4 DBL SEAL	1
6	300118	ROLLER INPUT FEED	1
7	1233	¼-20 X 5/8 BHCS BLK	1
8	1138	8-32 X 3/8 BHCS BLK	1
9	300115	COLLAR INPUT FEED ROLLER	1
10	1226	¼-20 X 3/8 SOC SET FP	1
11	300114	SPRING EXTENSION	1
12	300119	O-RING SQUARE INPUT FEED RLR	1
13	4020	8-32 NUT Z	1
14	4040	¼-20 JAM NUT Z	1
15	300029	SHAFT ROLLER INPUT FEED	1

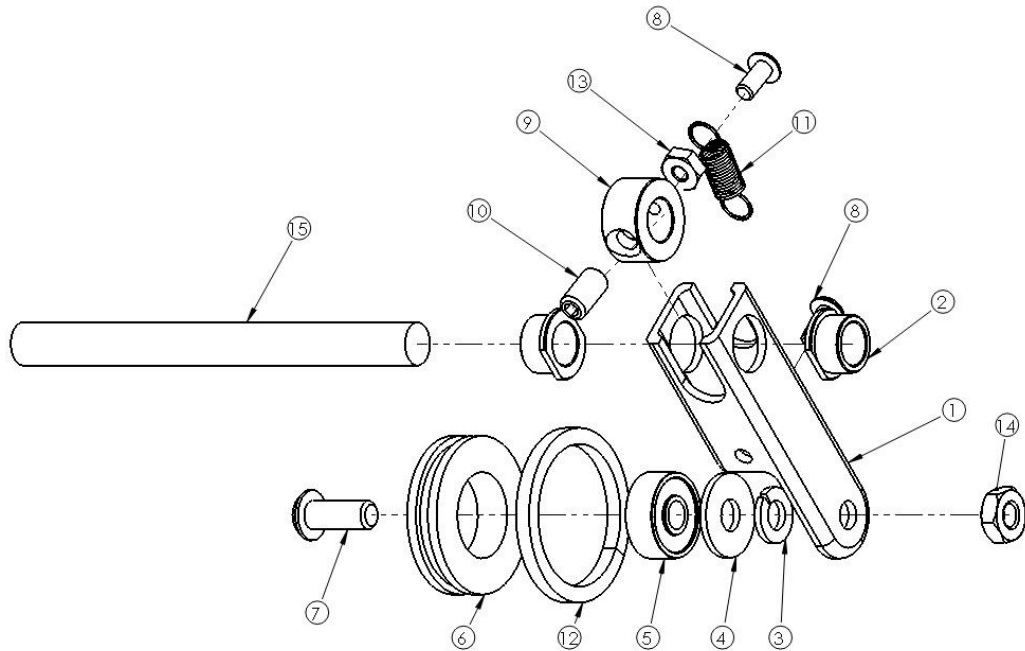


FIG. 8