



# POSTMATIC, INC.

## *MODEL 7000SA STAMP AFFIXER*

### Parts Manual



#### Postmatic, Inc.

9405 Holly Street Ste D  
Minneapolis, MN 55433

Phone 763-784-6046

Toll Free 888-784-6046

Fax 763-784-9433

## **Table of Contents**

Assembly Frame & Cover .....	2
Assembly Head End Plate .....	3
Assembly Back End Plate .....	4
Assembly Circuit Board.....	5
Assembly Discharge Roller .....	6
Assembly Electrical Panel .....	7
Assembly Nip Roller.....	8
Assembly Peel Bar Plate .....	9
Assembly Knife Pivot .....	10
Assembly Main Shaft.....	11
Assembly Stamp Roll Pivot .....	12
Assembly Take Up Arm.....	13
Assembly Traction Feed Roller .....	14
Assembly Transformer .....	15
Assembly Vacuum Head .....	16

## Assembly Frame & Cover

ITEM NO.	PART NUMBER	DESCRIPTION	QTY
1	200002	BASEPLATE	1
2	WIRE CLIP	WIRE CLIP	2
3	1061	5-40 X 1/2 SHCS BLK	2
4	200053	HEAD END PLATE	1
5	8810	1/4 X 3/8 POLY TUBING	1
6	200024	PROX MOUNTING BLOCK	1
7	100509	PROX-INDUCTIVE DC	1
8	1155	8-32 X 1/2 SHCS BLK	2
9	1140	8-32 X 3/8 PHMS Z	2
10	200035	MACHINE COVER	1
11	7090	COVER HANDLE	1
12	1072	5-40 X 1/4 BHCS BLK	8
13	8046	DOUBLE END 3/8" HOSE COUPLER	1
14	200004	TAIL END PLATE	1
15	1245	1/4-20 X 3/4 SHCS BLK	4
16	8195	BUSHING / AA-744-5	1
17	1150	8-32 X 3/8 SHCS BLK	2
18	4070	#8S WASHER FLAT BRASS	2

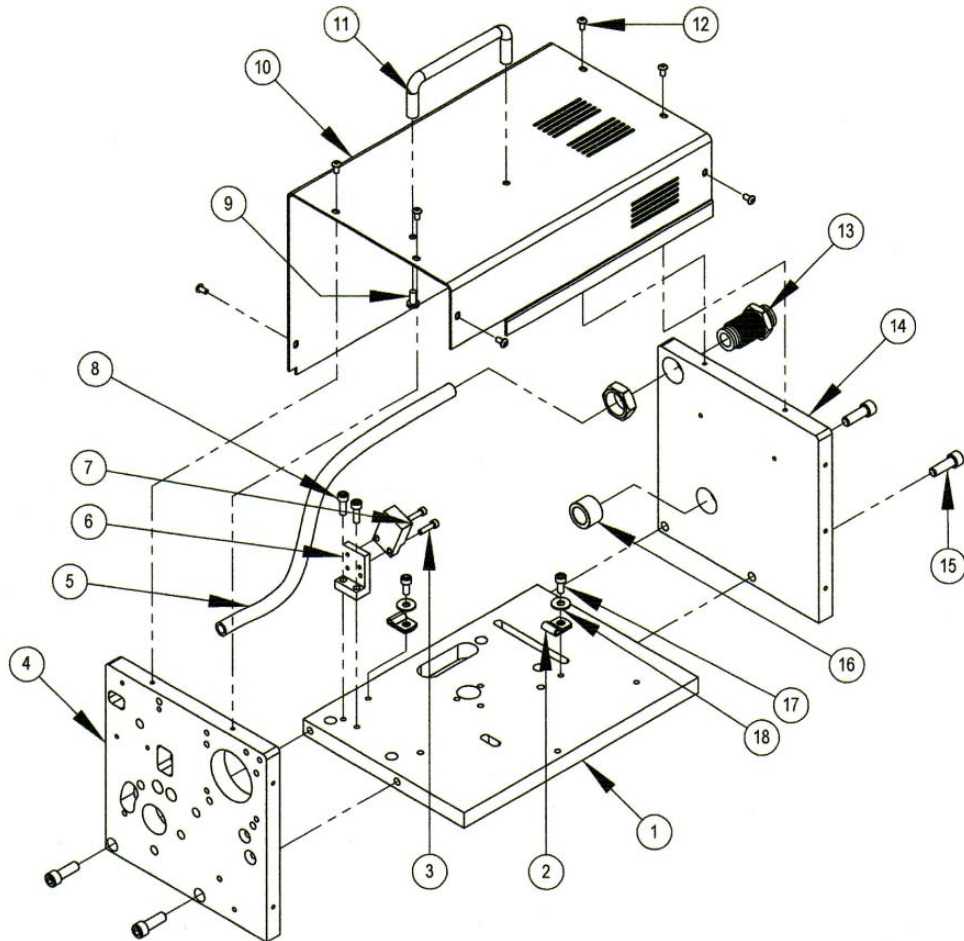


FIG. 1

## Assembly Head End Plate

ITEM NO.	PART NUMBER	DESCRIPTION	QTY
1	200053	HEAD END PLATE	1
2	5030	1/8 X 5/8 SPR PIN BLK	2
3	4035	1/4-20 NUT Z	1
4	500027	STEM FOR STAMP RETAINER	1
5	500029	STAMP RETAINER SPRING	1
6	500028	CLAMP FOR STAMP RETAINER	1
7	1040	5-40 X 1/4 SHCS BLK	2
8	3055	3/8 X 2-1/2 SH BOLT	1
9	8205	ROLLER BEARING R-6 DBL SEAL	2
10	200025	WEB IDLER ROLLER	1
11	5069	3/8" GRIP RING	1
12	200026	STATIONARY ROLLER	1
13	1212	10-24 X 1 SHCS BLK	1

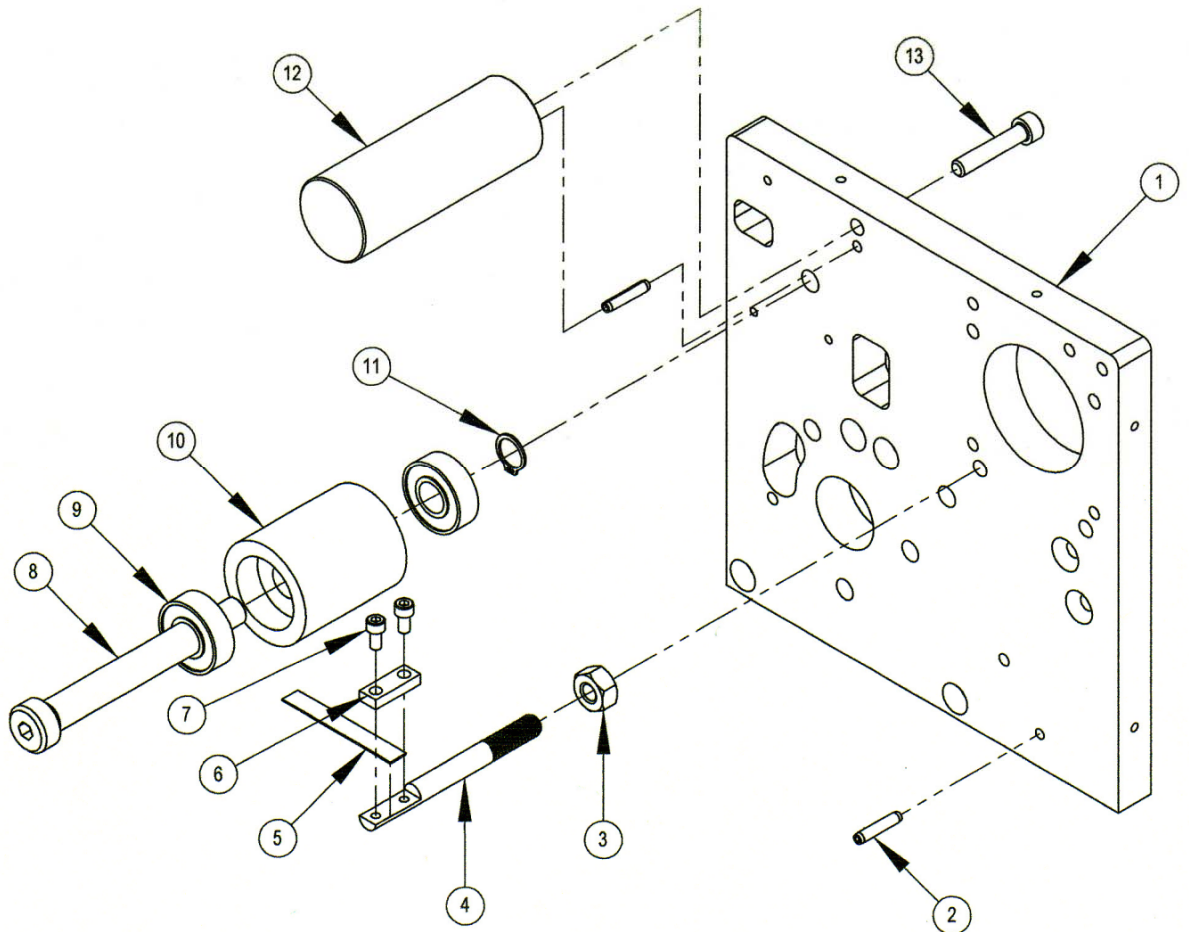


FIG. 2

## Assembly Back End Plate

ITEM NO.	PART NUMBER	DESCRIPTION	QTY
1	200053	HEAD END PLATE	1
2	8090	BUSHING / FB1014-6	1
3	5069	3/8" GRIP RING	1
4	500045	ANCHOR	1
5	4055	#8 FL WASHER Z	1
6	1215	10-24 X 1/2 HHMS Z	1
7	8205	ROLLER BEARING R-6 DBL SEAL	2
8	3045	3/8 X 3/4 SH BOLT	1
9	1195	10-24 X 5/8 SHCS BLK	3
10	211056	DC STEP DRIVE MOTOR ASSY	1

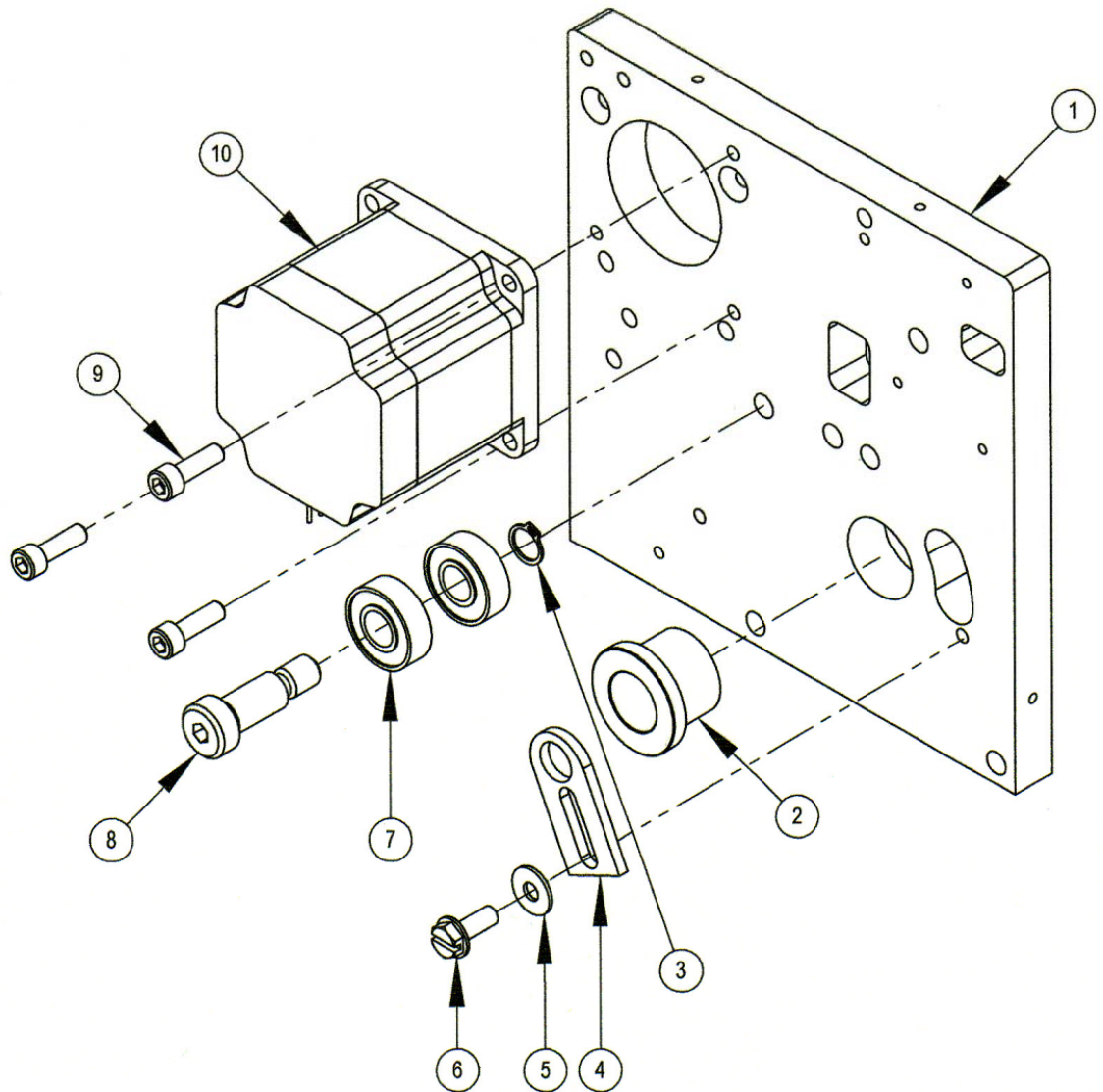


FIG. 3

# Assembly Circuit Board

ITEM NO.	PART NUMBER	DESCRIPTION	QTY
1	111502	BOARD ASSY STEPPER CIRCUIT P5	1
2	1050	5-40 X 3/8 SHCS BLK	1
3	100071	HEAT SINK CIRCUIT BOARD P5	1
4	4010	5-40 NUT Z	1
5	100070	POWER SUPPLY MTG PANEL	1
6	1040	5-40 X 1/4 SHCS BLK	2
7	1220	10-24 X 3/8 BHCS BLK	1
8	100064	PLATE STAND OFF	1
9	1195	10-24 X 5/8 SHCS BLK	1
10	1082	6-32 X 1/4 PHIL PAN M/S ZP	8
11	8007	1/2" ALUMINUM HEX STAND OFF	4

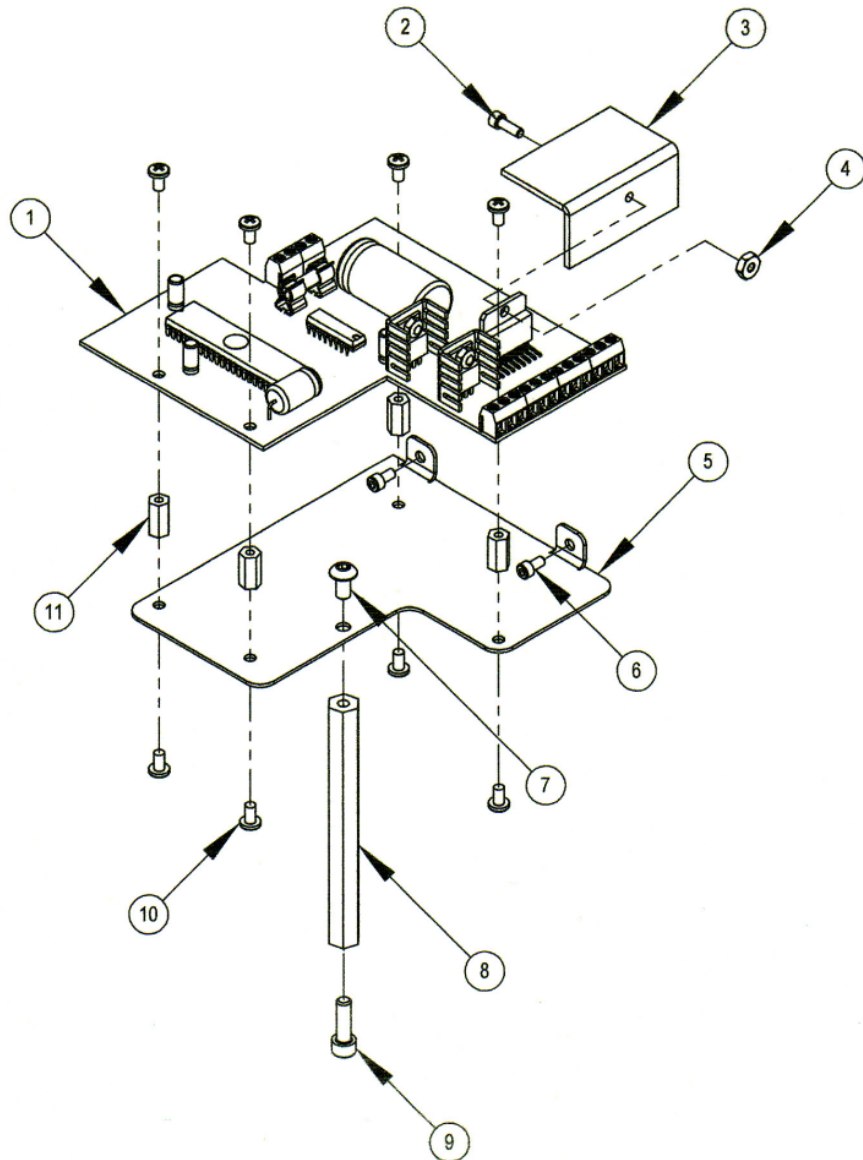


FIG. 4

## Assembly Discharge Roller

ITEM NO.	PART NUMBER	DESCRIPTION	QTY
1	700032	DISCH ROLLER	1
2	8071	THRUST PLATE	2
3	3015	1/4 X 1/2 SH BOLT	1
4	8073	BUSHING / AA 397	2
5	700031	DISCHARGE ROLLER ARM	1
6	700030	DISCHARGE ROLLER SHAFT	1
7	5060	5/16" SNAP RING	2
8	8200	ROLLER BEARING / B-59	2

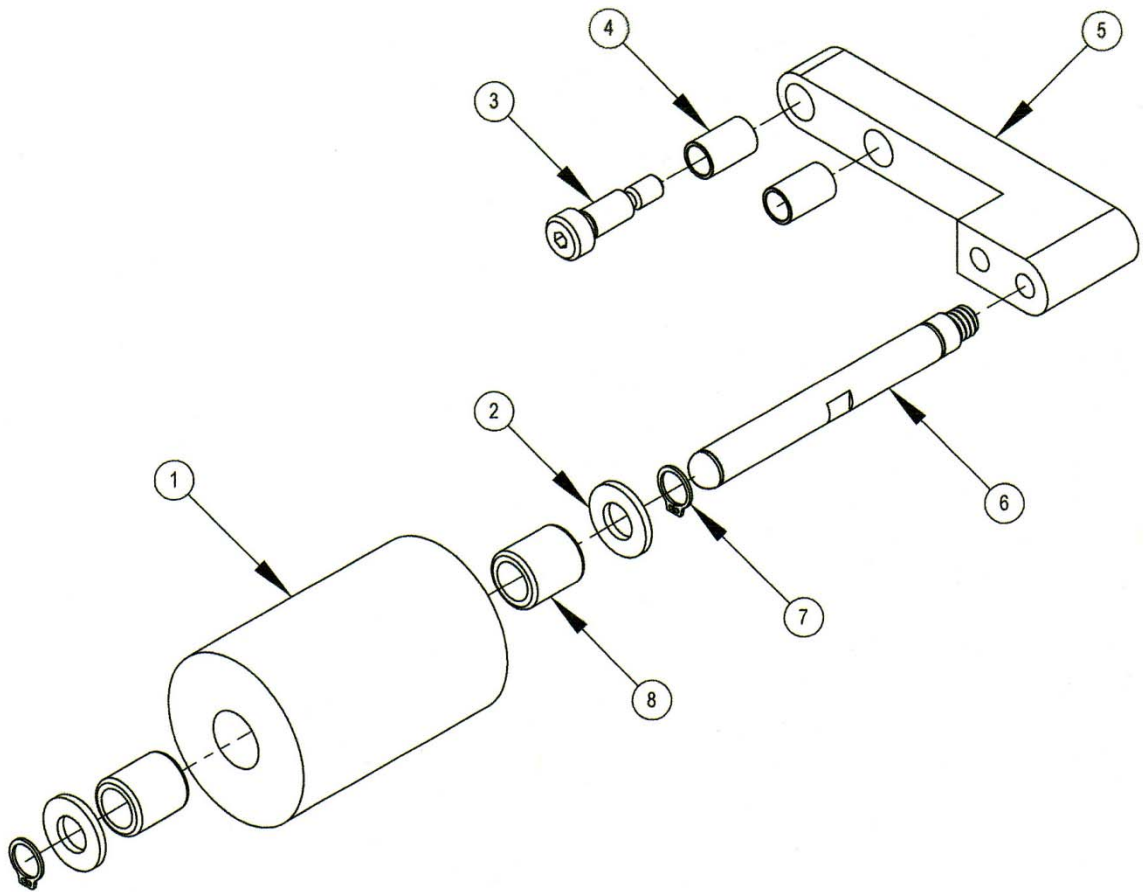


FIG. 5



# Assembly Electrical Panel

ITEM NO.	PART NUMBER	Description	QTY
1	200036	ELECTRICAL PANEL	1
2	100517	POWER ENTRY W/FUSE	1
3	100515	SWITCH ROCKER ON/OFF	1
4	1072	5-40 X 1/4 BHCS BLK	5
5	1095	6-32 X 5/8 SHCS BLK	2
6	100507	FIB OPTIC AMPLIFIER/ONE TOUCH	1
7	100507-BRKT	100507-BRKT	1
8	200023	AMPLIFIER MOUNTING BLOCK	1

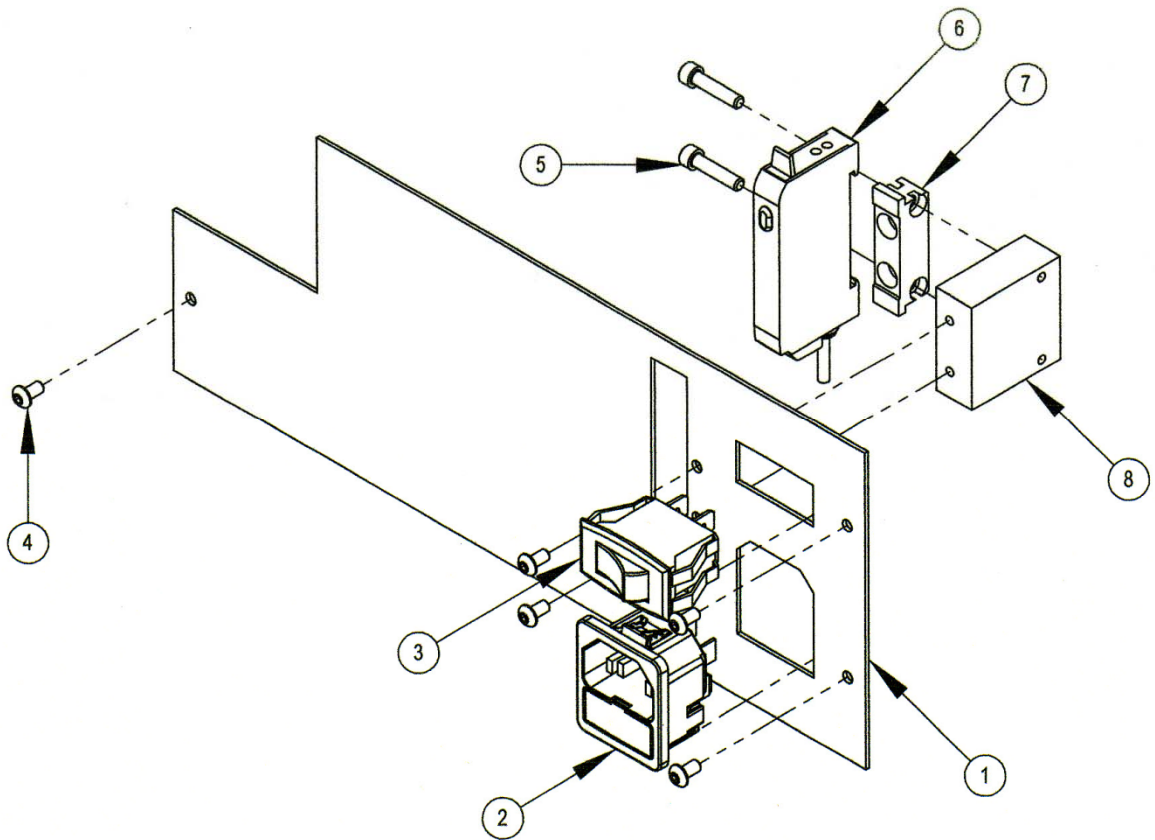


FIG. 6



## Assembly Nip Roller

ITEM NO.	PART NUMBER	DESCRIPTION	QTY
1	100550	NIP ROLLER NEOPRENE	1
2	200012	INNER NIP ROLLER ARM	1
3	4040	1/4-20 JAM NUT Z	1
4	8010	5/16 ID SET COLLAR	2
5	1183	10-32 X 1/2 SHCS BLK	1
6	100540	NIP ROLLER SPRING	1
7	200013	OUTER NIP ROLLER ARM	1
8	8125	BUSHING / AA 306-11	2
9	3040	5/16 X 2-1/2 SH BOLT	1
10	3030	5/16 X 1-1/4 SH BOLT	1

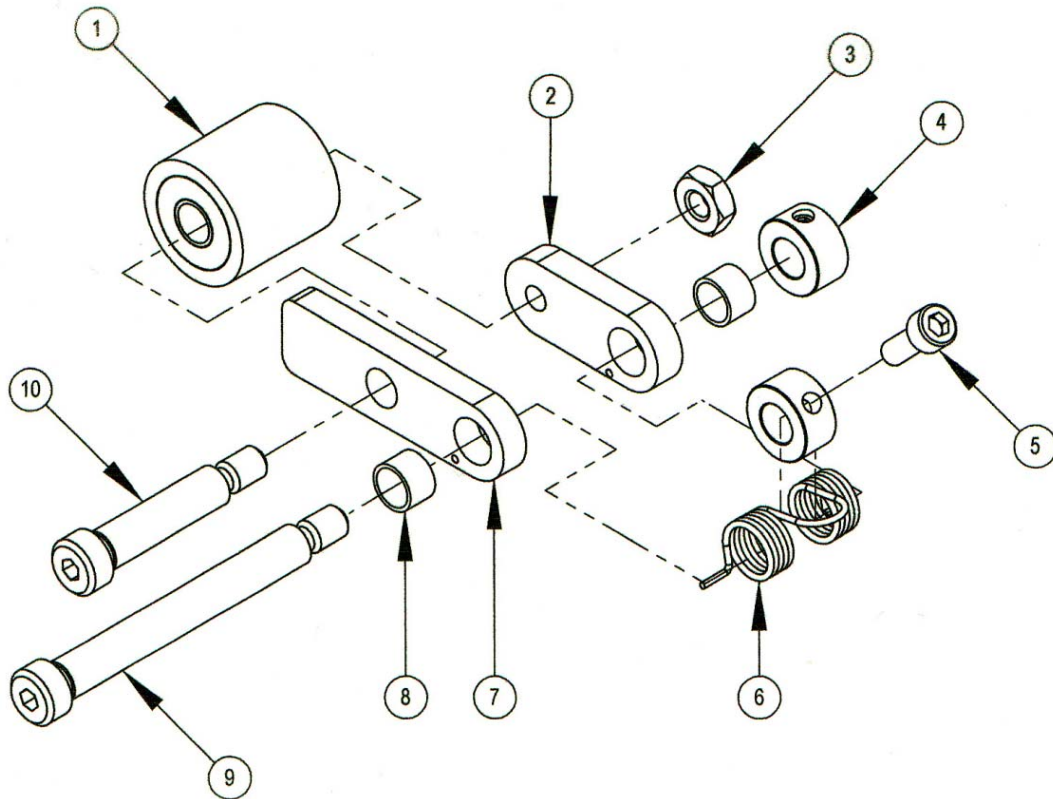


FIG. 7

# Assembly Peel Bar Plate

ITEM NO.	PART NUMBER	DESCRIPTION	QTY
1	200010	STAMP PEEL BAR PLATE	1
2	4065	#6L FL BRASS WASHER	2
3	1095	6-32 X 5/8 SHCS BLK	2
4	200011	STAMP PLATE MTG TAB	1
5	100009	PEEL BAR INSERT	1
6	1050	5-40 X 3/8 SHCS BLK	3
7	100011	OUTER PEEL BAR PLATE	1
8	1085	6-32 X 3/16 BHCS BLK	6
9	100555	RETRACT SPRING PLUNGER-STUBBY	1
10	100557	HEX NUT 1/4-20 SPECIAL	1
11	100542	STAMP TENSIONER SPRING	1
12	100505	OVAL APERATURE FIBER CABLE PR	1
13	100023	FIBER CABLE MTG BLOCK	2

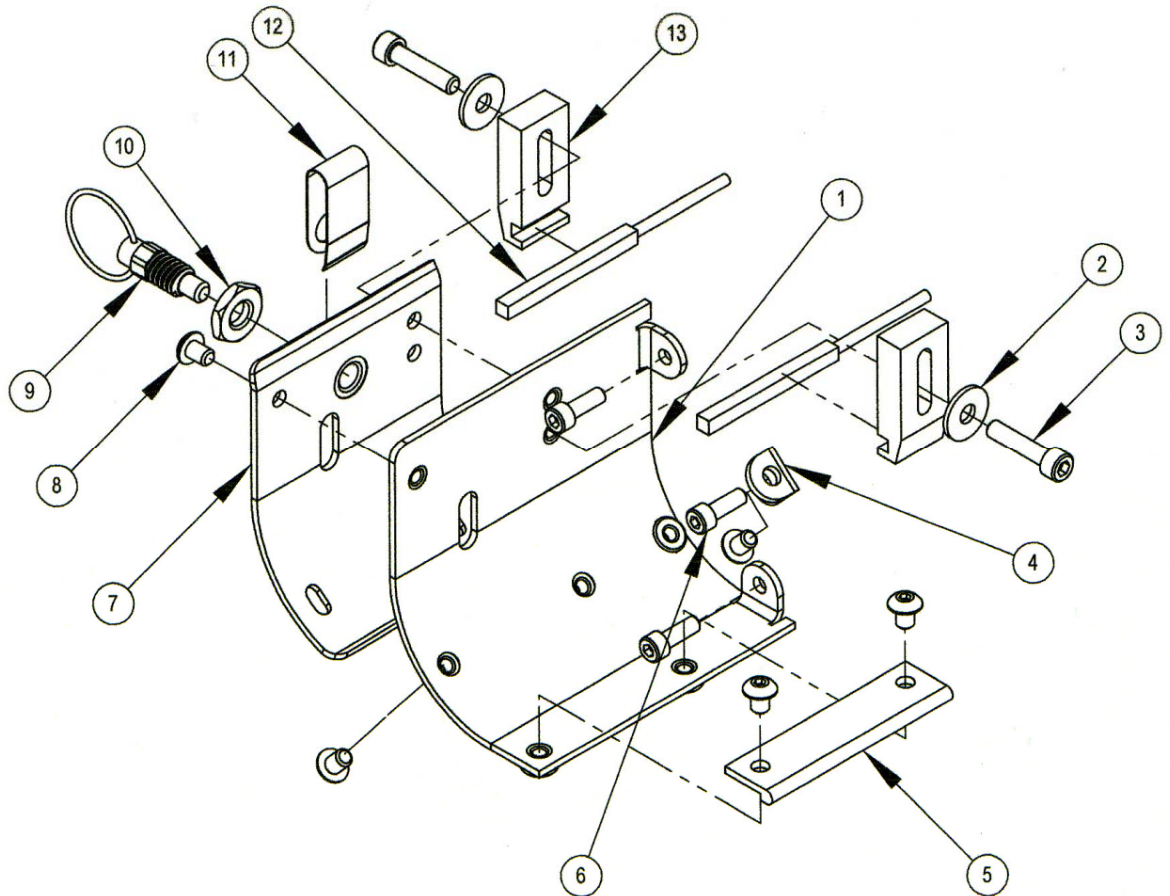


FIG. 8

# Assembly Knife Pivot

ITEM NO.	PART NUMBER	DESCRIPTION	QTY
1	200022	MOUNTING BAR	1
2	200018	STRIKER PLATE	1
3	1255	1/4-20 X 1/2 HHMS Z GRADE 5	1
4	100543	DELIVERY BLADE RETURN SPRING	1
5	700009	PIVOT FOR MOUNTING BAR	1
6	8070	BUSHING / AA304-2	1
7	700010	YOKE FOR PIVOT	1
8	1240	1/4-20 X 5/8 SHCS BLK	2
9	3020	1/4 X 3/4 SH BOLT	1
10	233021	DELIVERY BLADE/TUNGSTEN	1
11	4065	#6L FL BRASS WASHER	2
12	1050	5-40 X 3/8 SHCS BLK	2
13	1185	10-24 X 3/8 SHCS BLK	1
14	1190	10-24 X 1/2 SHCS BLK	3

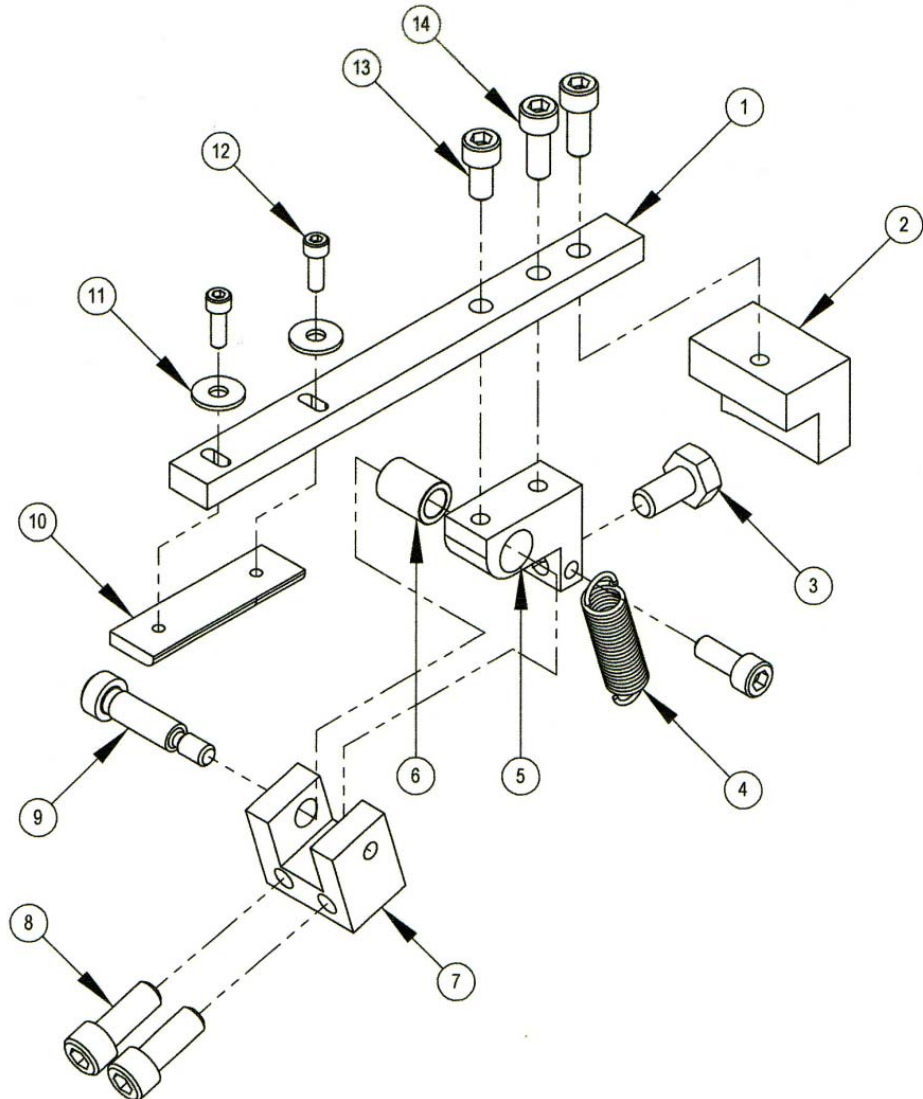


FIG. 9

## Assembly Main Shaft

ITEM NO.	PART NUMBER	DESCRIPTION	QTY
1	200014	MAIN SHAFT	1
2	5015	3/16 X 13/32 SQ KEY	1
3	1230	1/4-20 X 1/2 SOC SET KC	1
4	1175	10-32 X 1/2 BHCS BLK	2
5	700024	DRIVE GEAR	1
6	700015	GEAR HUB	1 </td
7	2030	1/4-28 X 1/4 SOC SET CUP	2
8	700007	HUB	1
9	100575	T/U ROLLER DRIVE BELT	1
10	8210	CAM FOLLOWER	1
11	100560	TU ROLLER DRIVE PULLEY	1

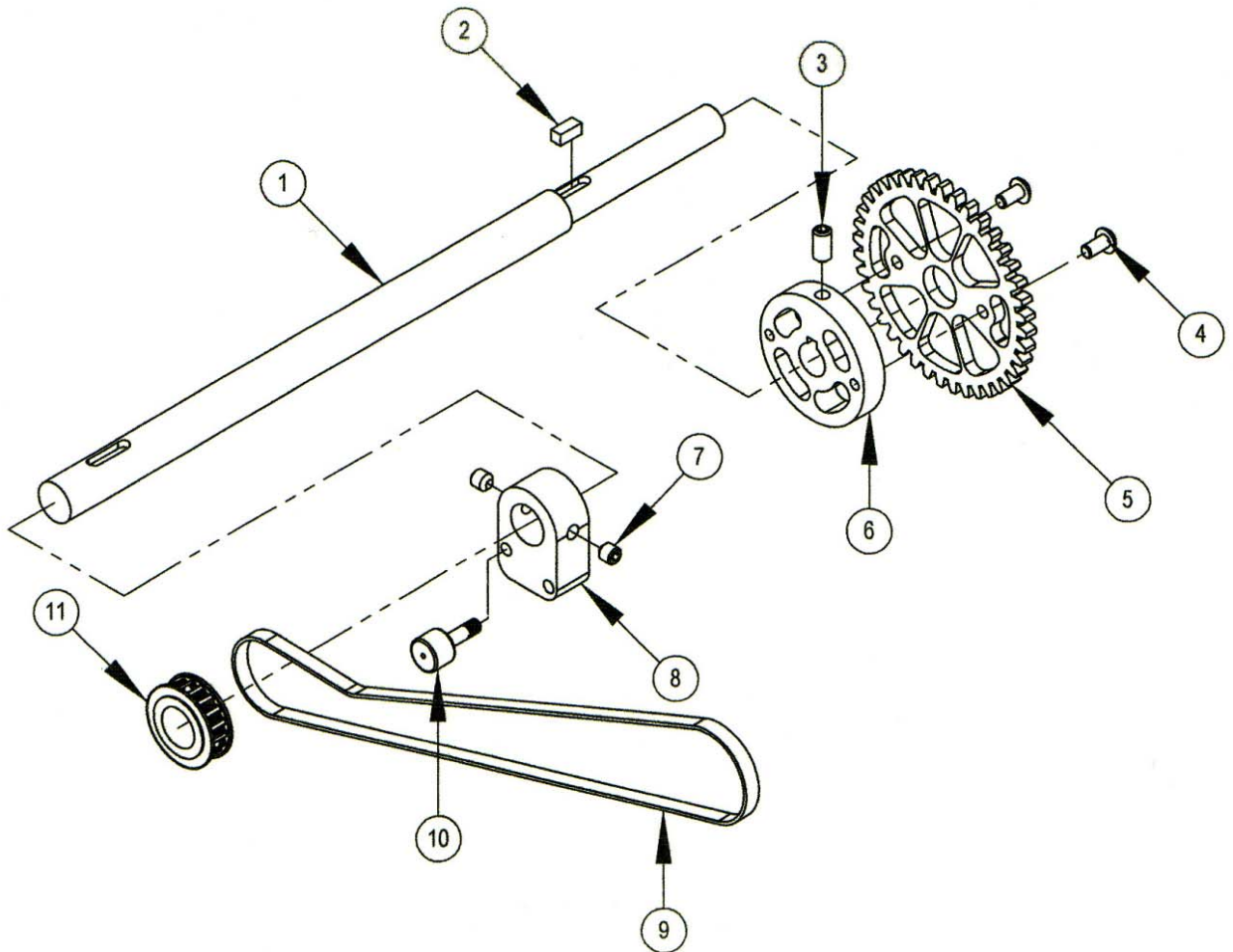


FIG. 10

# Assembly Stamp Roll Pivot

ITEM NO.	PART NUMBER	DESCRIPTION	QTY
1	200008	STAMP ROLL SUPPORT BAR	1
2	200017	STAMP ROLL PIVOT SHAFT	1
3	8020	3/8 ID SET COLLAR	1
4	1070	5-40 X 1/2 FHCS BLK	3
5	8120	BUSHING / AA 502	2
6	5065	3/8" SNAP RING	1
7	1065	5-40 X 3/8 FHCS BLK	3
8	733056	SPRING PLUNGER	1
9	733050	COVER HUB	1
10	200029	INNER AND OUTER SHEEVE	2
11	200028	STAMP ROLL PIVOT	1
12	1190	10-24 X 1/2 SHCS BLK	2
13	200063	DANCER ARM ROLLER	1
14	200009	DANCER ARM	1
15	1236	1/4-20 X 3/4 FHCS BLK	1
16	8071	THRUST PLATE	1
17	5030	1/8 X 5/8 SPR PIN BLK	1
18	8075	BUSHING / AA397-1	1
19	100545	DANCER ARM SPRING	1
20	1040	5-40 X 1/4 SHCS BLK	1
21	633048	T/U ARM SHAFT	1
22	2010	10-24 X 1/4 SOC SET G	1
23	633046	TENSIONER ADJUST WHEEL	1
24	5028	1/8 X 1/2 SPR PIN Z	1
25	4055	#8 FL WASHER Z	1
26	1200	10-24 X 3/4 SHCS BLK	1

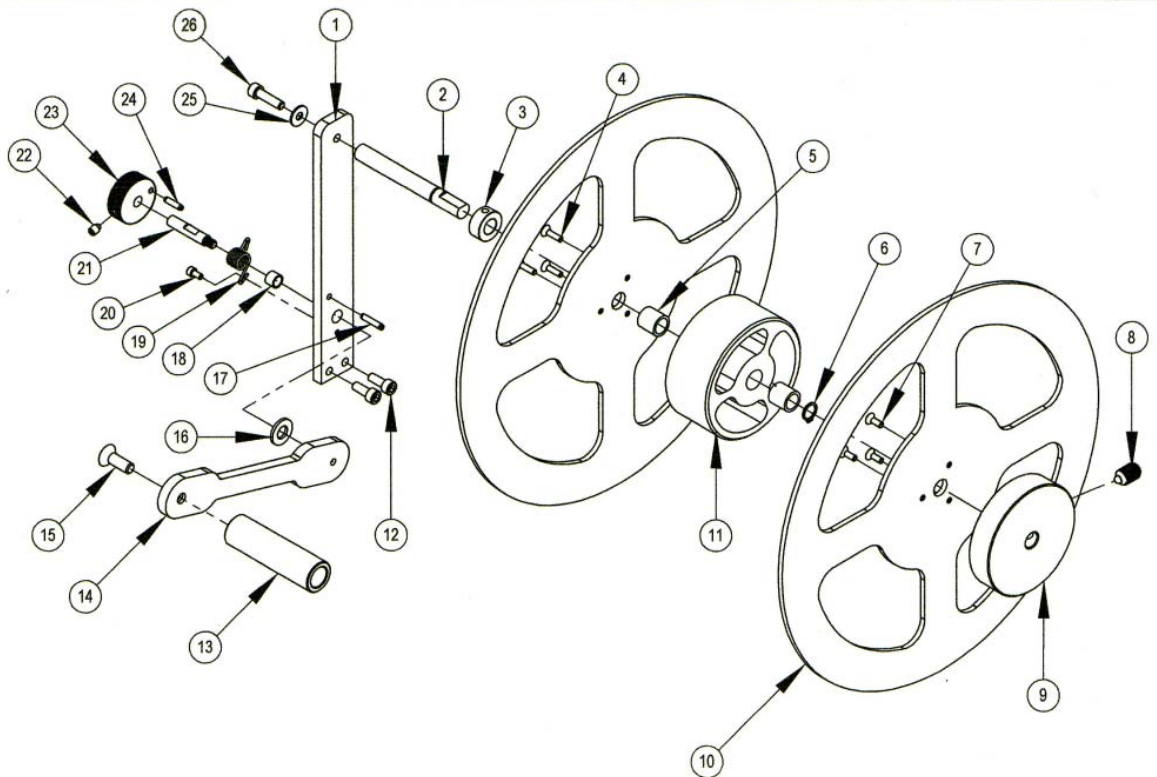


FIG. 11



# Assembly Take Up Arm

ITEM NO.	PART NUMBER	DESCRIPTION	QTY
1	200019	TAKE UP ROLLER	1
2	2010	10-24 X 1/4 SOC SET G	3
3	200063	DANCER ARM ROLLER	1
4	100061	T/U DANCER ARM	1
5	1236	1/4-20 X 3/4 FHCS BLK	1
6	100062	T/U ARM SHAFT	1
7	5030	1/8 X 5/8 SPR PIN BLK	1
8	1180	10-24 X 3/4 FHCS BLK	2
9	200006	T/U ROLLER ARM	1
10	8005	1" ALUMINUM HEX STAND OFF	3
11	5028	1/8 X 1/2 SPR PIN Z	1
12	100545	DANCER ARM SPRING	1
13	633046	TENSIONER ADJUST WHEEL	1
14	1040	5-40 X 1/4 SHCS BLK	1
15	8075	BUSHING / AA397-1	2
16	1120	8-32 X 1/2 FHCS BLK	6
17	200007	T/U ROLLER ARM SHORT	1
18	8185	BUSHING / FF-520-9	1
19	100530	T/U ROLLER FRIC CLUTCH	1
20	8180	BUSHING / FF-520-5	1
21	1072	5-40 X 1/4 BHCS BLK	8
22	200038	T/U ROLLER ARM COVER	1
23	200016	T/U ROLLER SHAFT	1
24	8071	THRUST PLATE	1

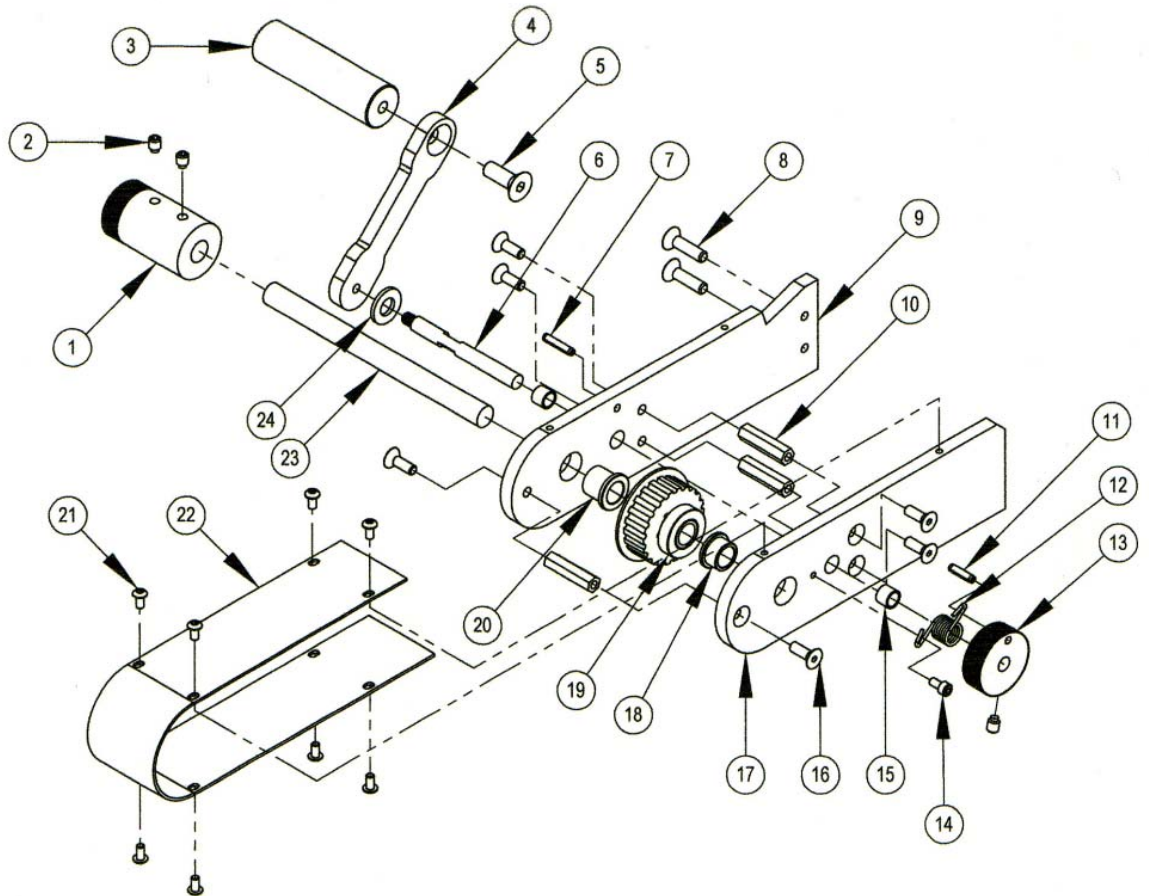


FIG. 12

## Assembly Traction Feed Roller

ITEM NO.	PART NUMBER	DESCRIPTION	QTY
1	200020	TRACTION FEED ROLLER	1
2	8185	BUSHING / FF-520-9	1
3	100055	OUTBOARD BEARING PLATE	1
4	1120	8-32 X 1/2 FHCS BLK	2
5	200057	BEARING PLATE SHAFT	2
6	1130	8-32 X 3/4 FHCS BLK	2
7	2010	10-24 X 1/4 SOC SET G	2
8	1224	10-24 X 1/4 SOC SET CUP PT BLK	2
9	200059	MOTOR SHAFT EXTENSION	1

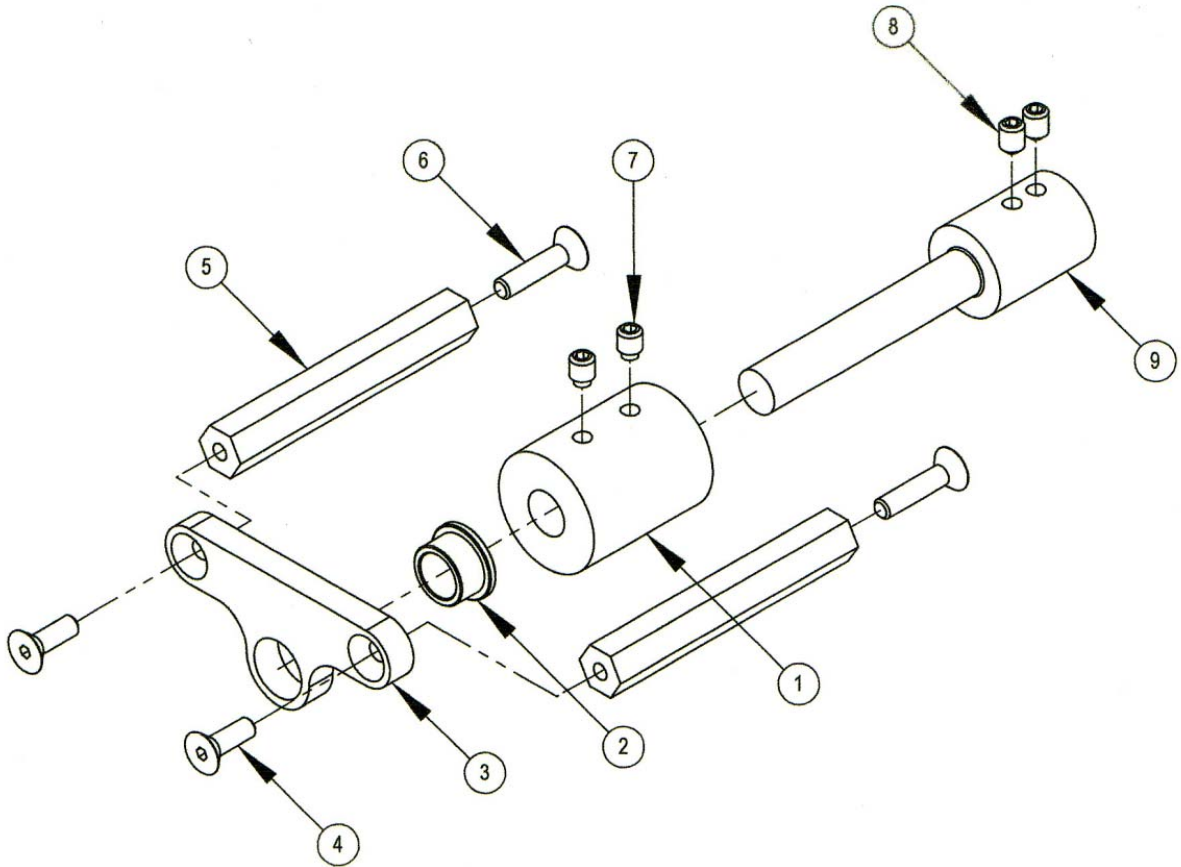


FIG. 13



## Assembly Transformer

ITEM NO.	PART NUMBER	DESCRIPTION	QTY
1	100504	TRANSFORMER 115/230V 18V 3.12A	1
2	1222	10-24 X 1 BHCS BLK	2
3	1212	10-24 X 1 SHCS BLK	2
4	100065	TRANSFORMER MTG BRACKET	1

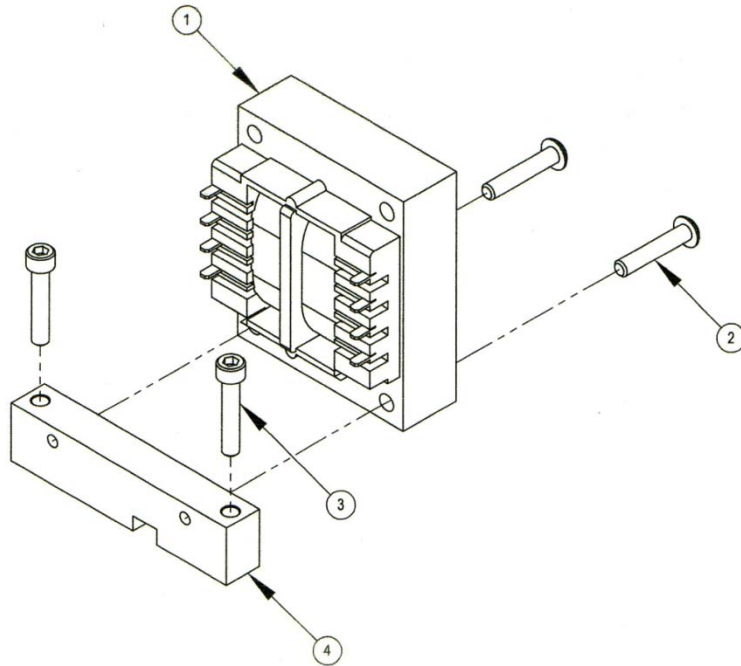


FIG. 14

## Assembly Vacuum Head

ITEM NO.	PART NUMBER	DESCRIPTION	QTY
1	700001	VACUUM HEAD	1
2	1230	1/4-20 X 1/2 SOC SET KC	1
3	5010	3/16 X 1/2 SQ KEY	1
4	2010	10-24 X 1/4 SOC SET G	2
5	500026	STAMP PAD	1
6	1035	4-40 X 3/8 FHCS BLK	4
7	700019	VACUUM VALVE	1
8	8066	BARB FITTING 1/4" ID HOSE	1
9	600063	VACUUM VALVE SPRING	3

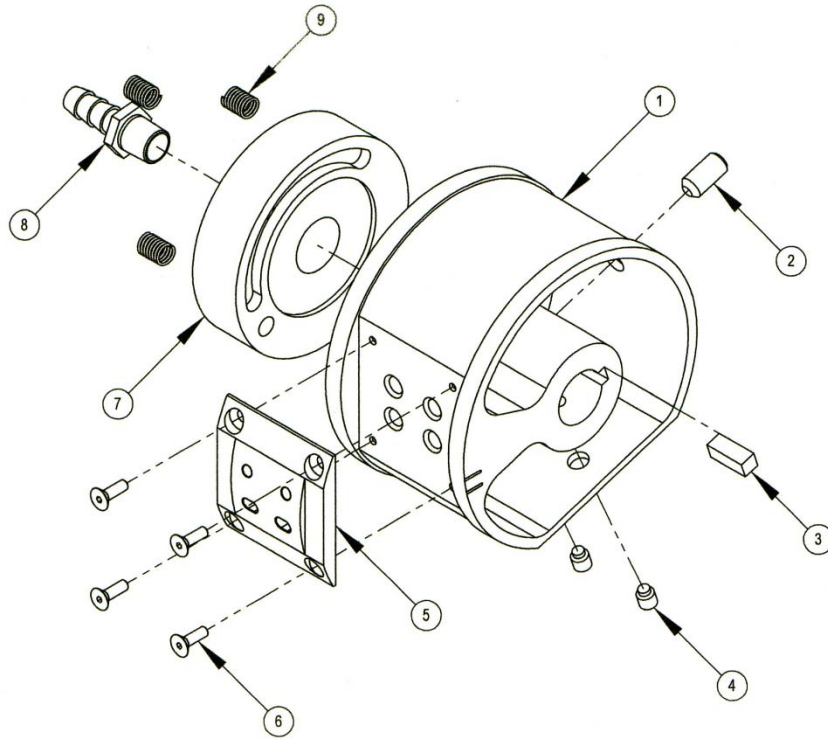


FIG. 15